

9904 Keele St.

Maple



3

Bedrooms



3

Bathrooms



2

Parking
Spaces



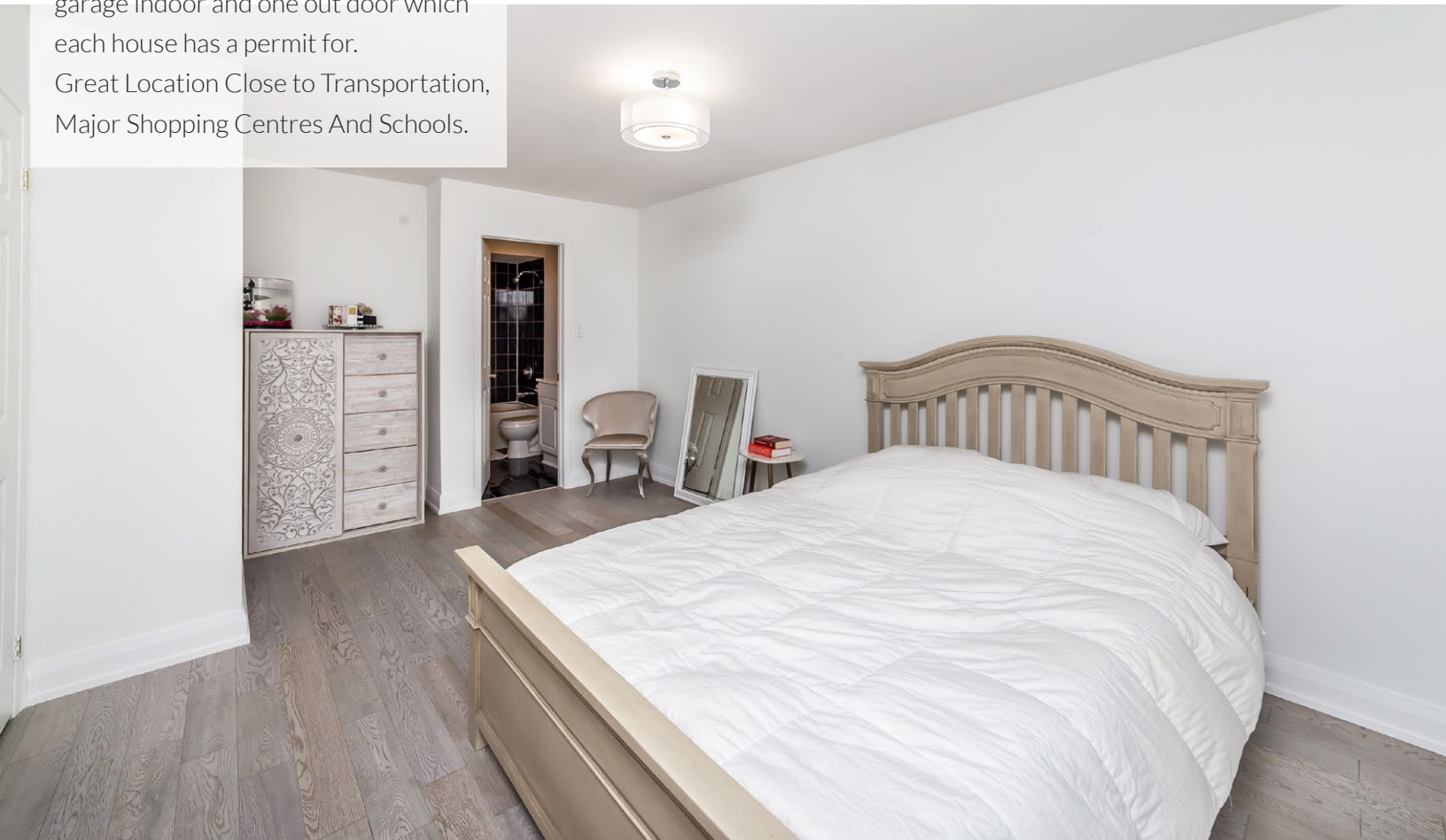
In the Heart of Old Maple Surrounded by Custom Multi Million Dollar Homes. Luxury Freshly Renovated Beautiful Neutral Decor. Sparkling Clean. Spacious End Unit with 2400 sqft. total living area. Modern Renovated Family Sized Eat in Kitchen with Lots of Counter Space. Countertops are quartz. Engineered wide plank hardwood flooring throughout. Corner Fireplace.



Large Bedrooms. Semi En-Suite Off Master. Walk-Out to Gorgeous Sunroom & Deck From Kitchen & Fully Fenced Yard.

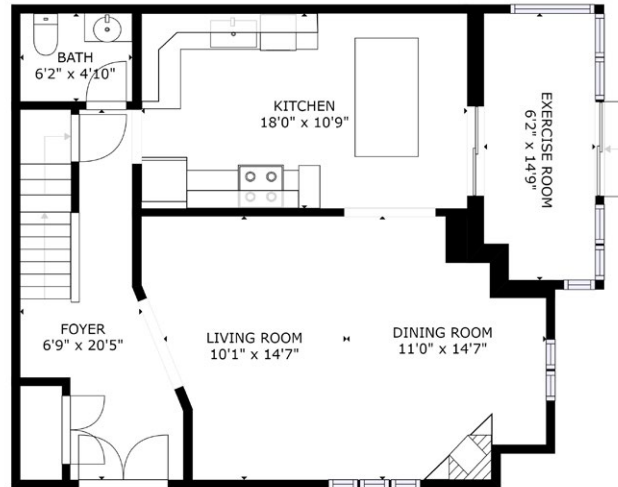
There are two parking spots available 1 garage indoor and one out door which each house has a permit for.

Great Location Close to Transportation, Major Shopping Centres And Schools.





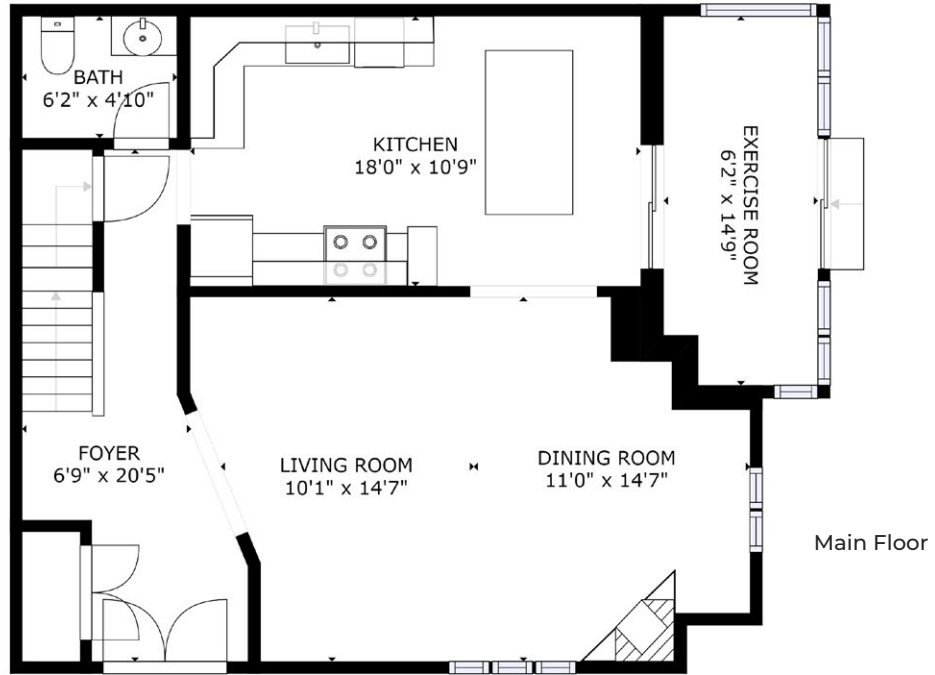
Basement

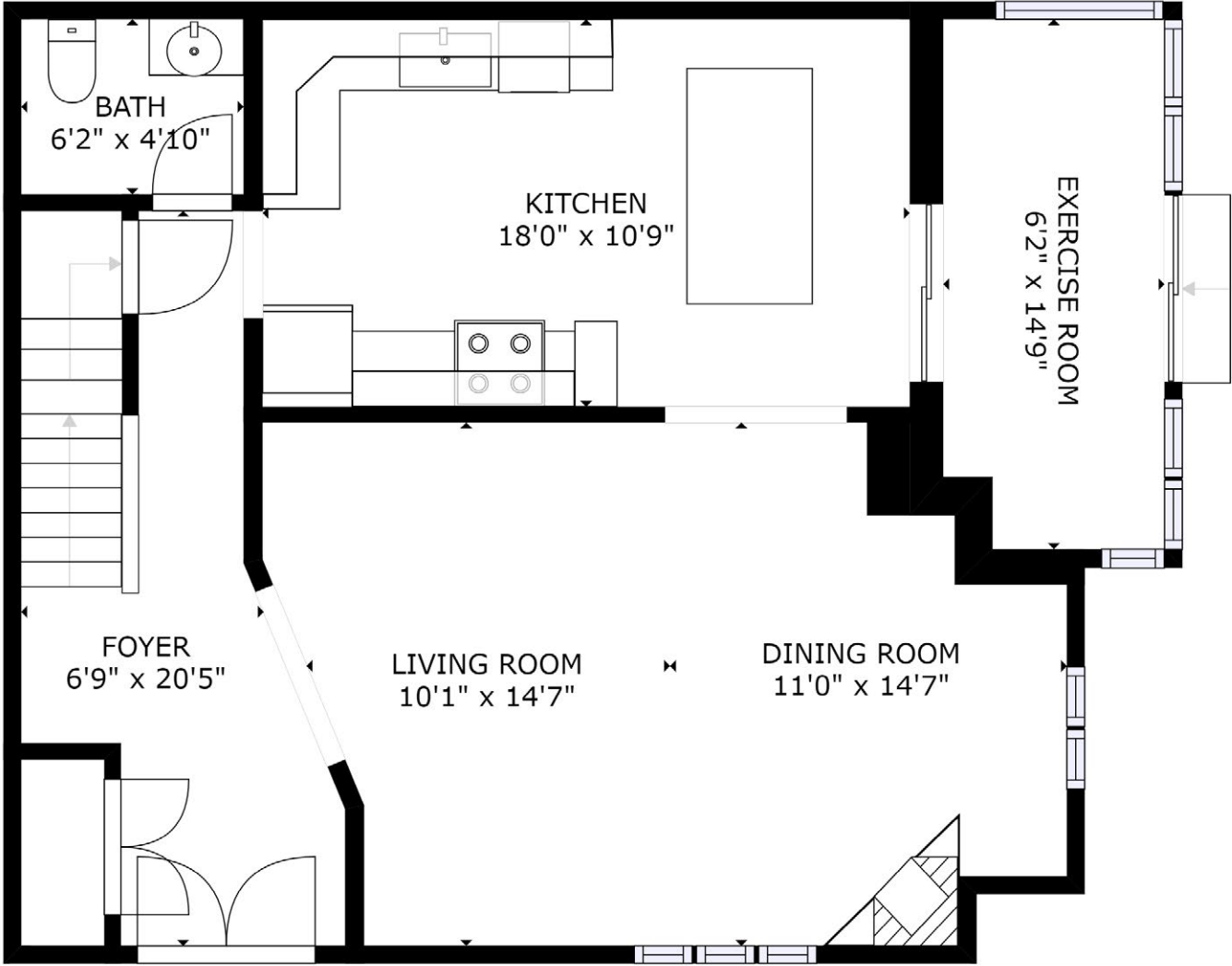


Main Floor



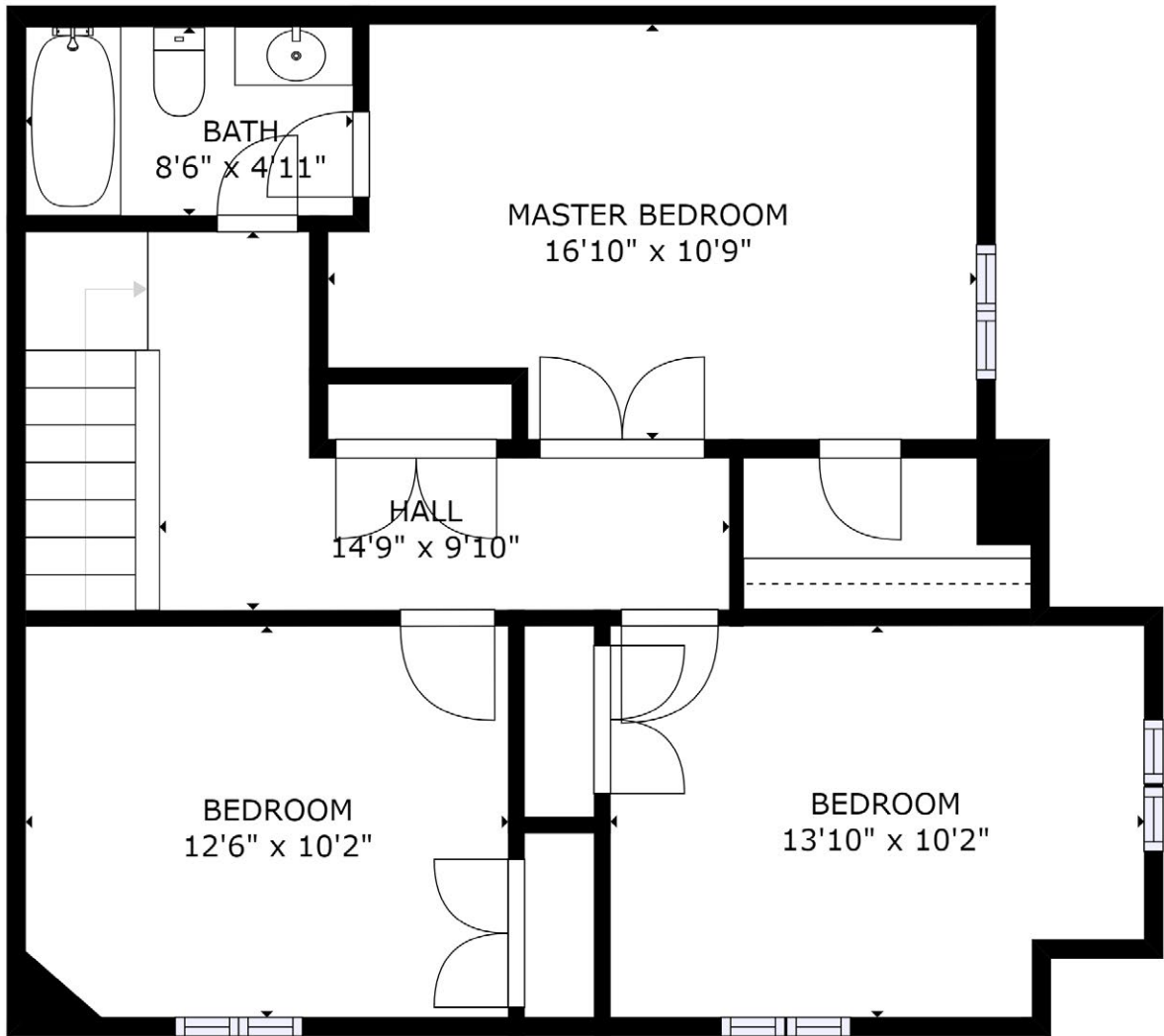
Second Floor





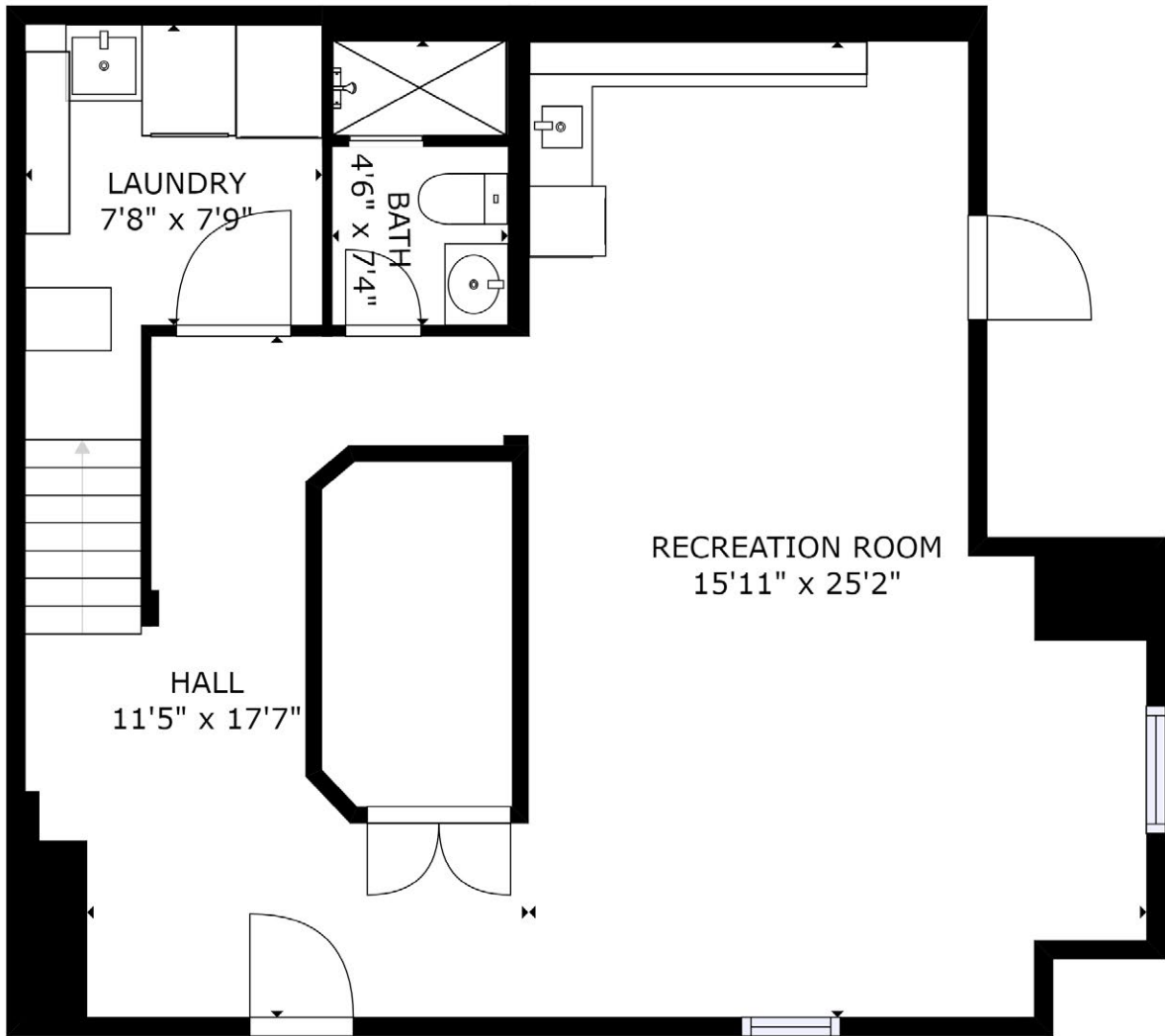
Main Floor

SIZES AND DIMENSIONS ARE APPROXIMATE, ACTUAL MAY VARY.



Second Floor

SIZES AND DIMENSIONS ARE APPROXIMATE, ACTUAL MAY VARY.



Basement

SIZES AND DIMENSIONS ARE APPROXIMATE, ACTUAL MAY VARY.

9904 Keele St, Maple, ON L6A 1Z8

SCHOOLS

With excellent assigned and local public schools very close to this home, your kids will get a great education in the neighbourhood.



Joseph A Gibson PS

Designated Catchment School
Grades PK to 8
50 Naylor St

Julliard PS

Designated Catchment School
Grades 2 to 8
61 Julliard Dr

ÉE La Fontaine

Designated Catchment School
Grades PK to 6
10110 Islington Ave

Maple HS

Designated Catchment School
Grades 9 to 12
50 Springside Rd

ÉS Norval-Morrisseau

Designated Catchment School
Grades 7 to 12
51 Wright St

PARKS & REC.

This home is located in park heaven, with 4 parks and 9 recreation facilities within a 20 minute walk from this address.



Ramsey Armitage Park

8 Merino Rd



 3 min

Civic Park

299 Marlott Road



 4 min

Reeves Park

251 Barrhill Road



 9 min

FACILITIES WITHIN A 20 MINUTE WALK

4 Playgrounds

1 Basketball Court

3 Sports Fields

1 Multi-Use Pad

TRANSIT

Public transit is at this home's doorstep for easy travel around the city. The nearest street transit stop is only a minute walk away and the nearest rail transit stop is a 12 minute walk away.

Nearest Rail Transit Stop

Maple GO

 12 min

Nearest Street Level Transit Stop

Keele St Stop # 3964

 1 min

SAFETY

With safety facilities in the area, help is always close by. Facilities near this home include a fire station, a police station, and a hospital within 5.38km.

Mackenzie Richmond Hill Hospital

10 Trench St

Fire Station

9290 Keele St

Police Station

2700 Rutherford Road

CONVENIENCE

This home is located near everyday amenities to make your daily errands easier.

Coffee

Gym

Grocery

Gas Station

9904 Keele St, Maple, ON L6A 1Z8

PUBLIC SCHOOLS

Your neighbourhood is part of a community of Public Schools offering Elementary, Middle, and High School programming.

Joseph A Gibson PS

Designated Catchment School
Grades PK to 8
50 Naylor St

ÉÉ La Fontaine

Designated Catchment School
Grades PK to 6
10110 Islington Ave

ÉS Norval-Morrisseau

Designated Catchment School
Grades 7 to 12
51 Wright St

Julliard PS

Designated Catchment School
Grades 2 to 8
61 Julliard Dr

Maple HS

Designated Catchment School
Grades 9 to 12
50 Springside Rd

ALTERNATIVE & SPECIAL SCHOOLS

Nearby alternative and special education schools include:

St Luke Catholic Learning Centre

Grades 9 to 12
8787 Weston Rd



CATHOLIC SCHOOLS

Your neighbourhood is part of a community of Catholic Schools offering Elementary, Middle, and High School programming.

St David Catholic ES

Grades PK to 8 (Assigned)
240 Killian Rd

ÉÉC Le-Petit-Prince

Grades PK to 6 (Assigned)
79 Avro Rd

St Joan of Arc Catholic HS

Grades 9 to 12 (Assigned)
1 St Joan of Arc Ave

ÉSC Renaissance

Grades 7 to 12 (Assigned)
700 Bloomington Rd

PRIVATE SCHOOLS

The private schools nearest to you are:



Roots Private School

Grades PK to 6
10195 Keele St

The Hill Academy

Grades 9 to 12
2600 Rutherford Rd

Rutherford Private School

Grades PK to 12
37 Jacob Keffer Pkwy

RoyalCrest Academy

Grades PK to 8
9500 Dufferin St

9904 Keele St, Maple, ON L6A 1Z8

