



# 527 Roseheath Dr.

Milton



  
3  
Bedrooms

  
4  
Parking  
Spaces

  
3  
Bathrooms





High Demand Bronte Meadows. Safe, Family Friendly Neighbourhood. Detached Link Renovated Top to Bottom. Custom Kitchen w/ Granite counters. Beautiful Finished Basement. Work from Home Office Space. Master Ensuite Like a Spa. Double Driveway Up To 5 Cars. Close to the Best Schools, Leisure Center and Transit. This Home Has It All!!



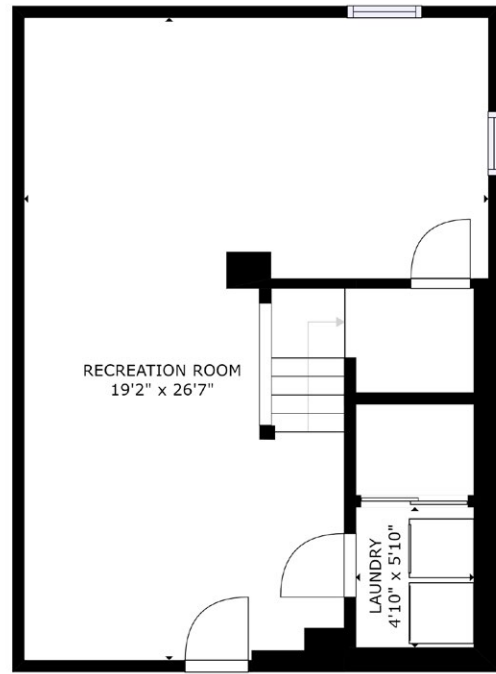
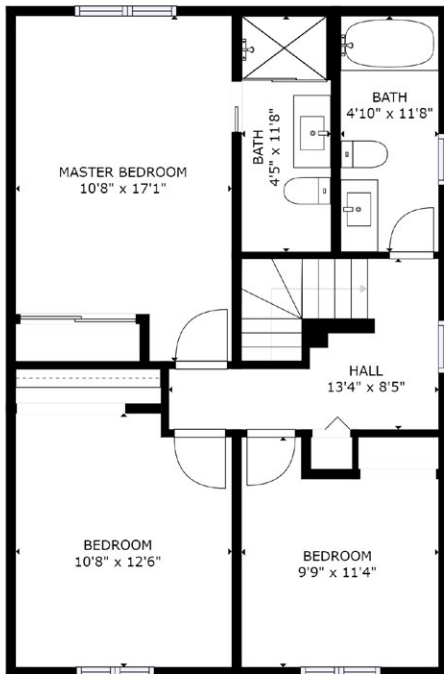
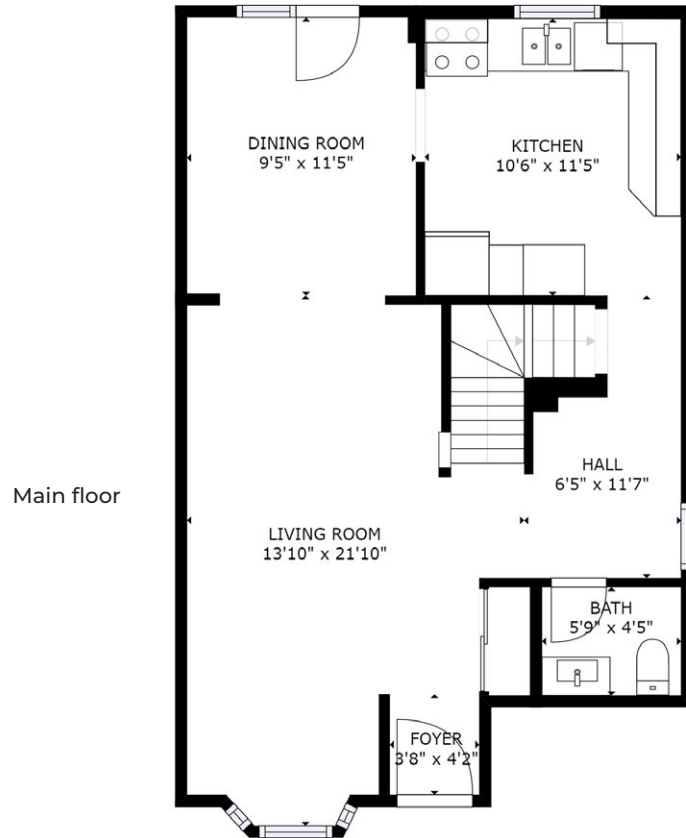


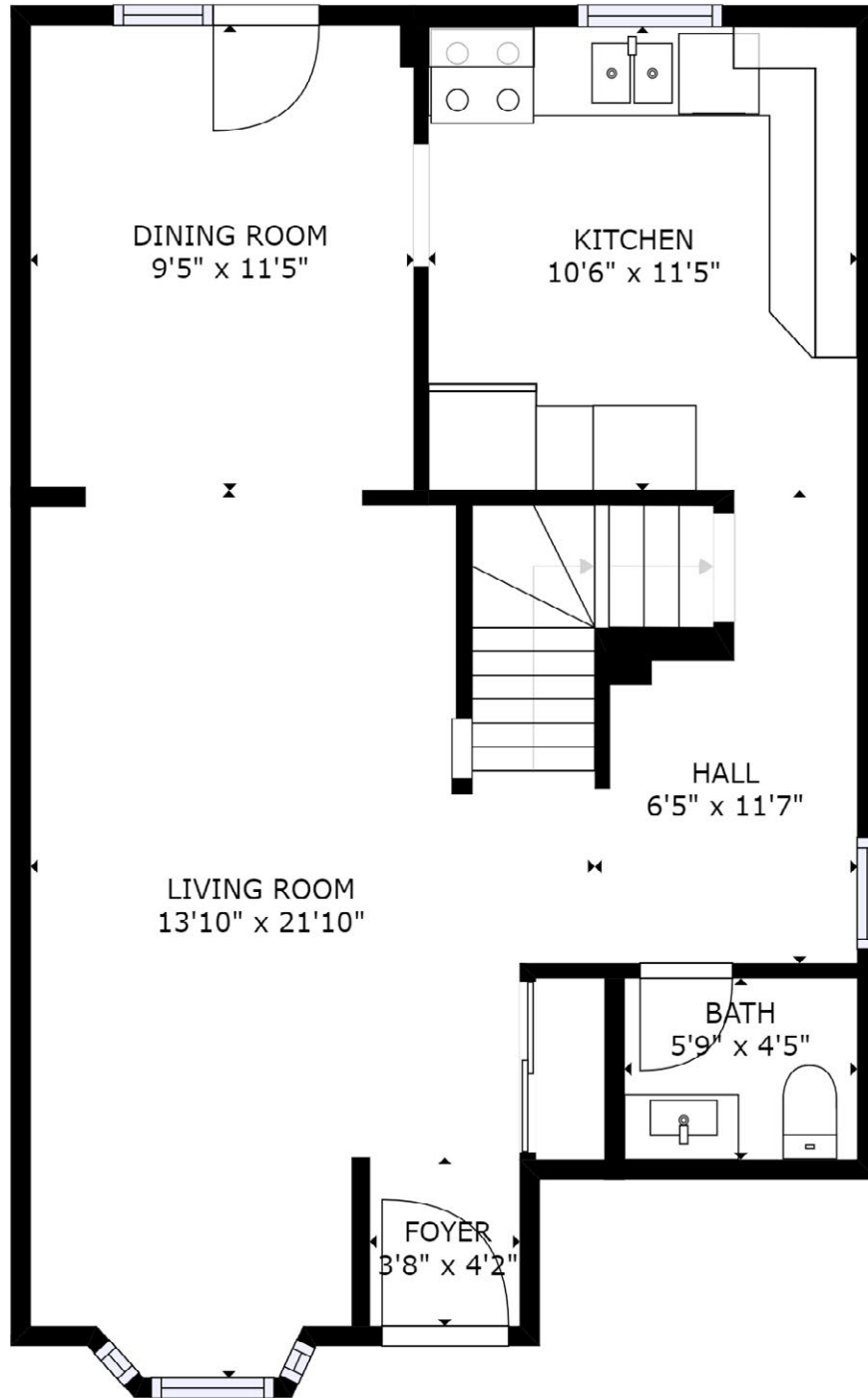
527 Roseheath Dr.  
Milton





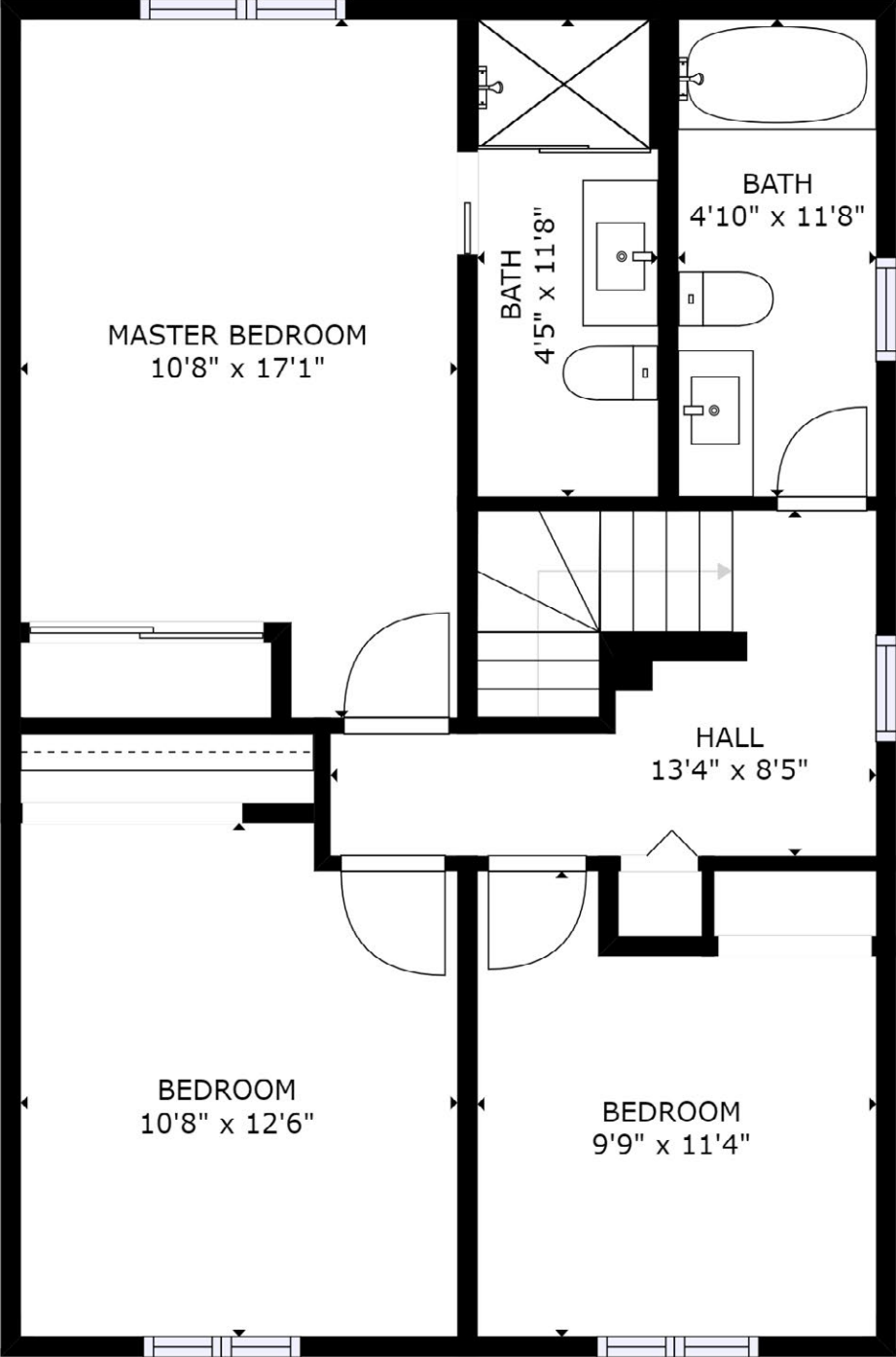






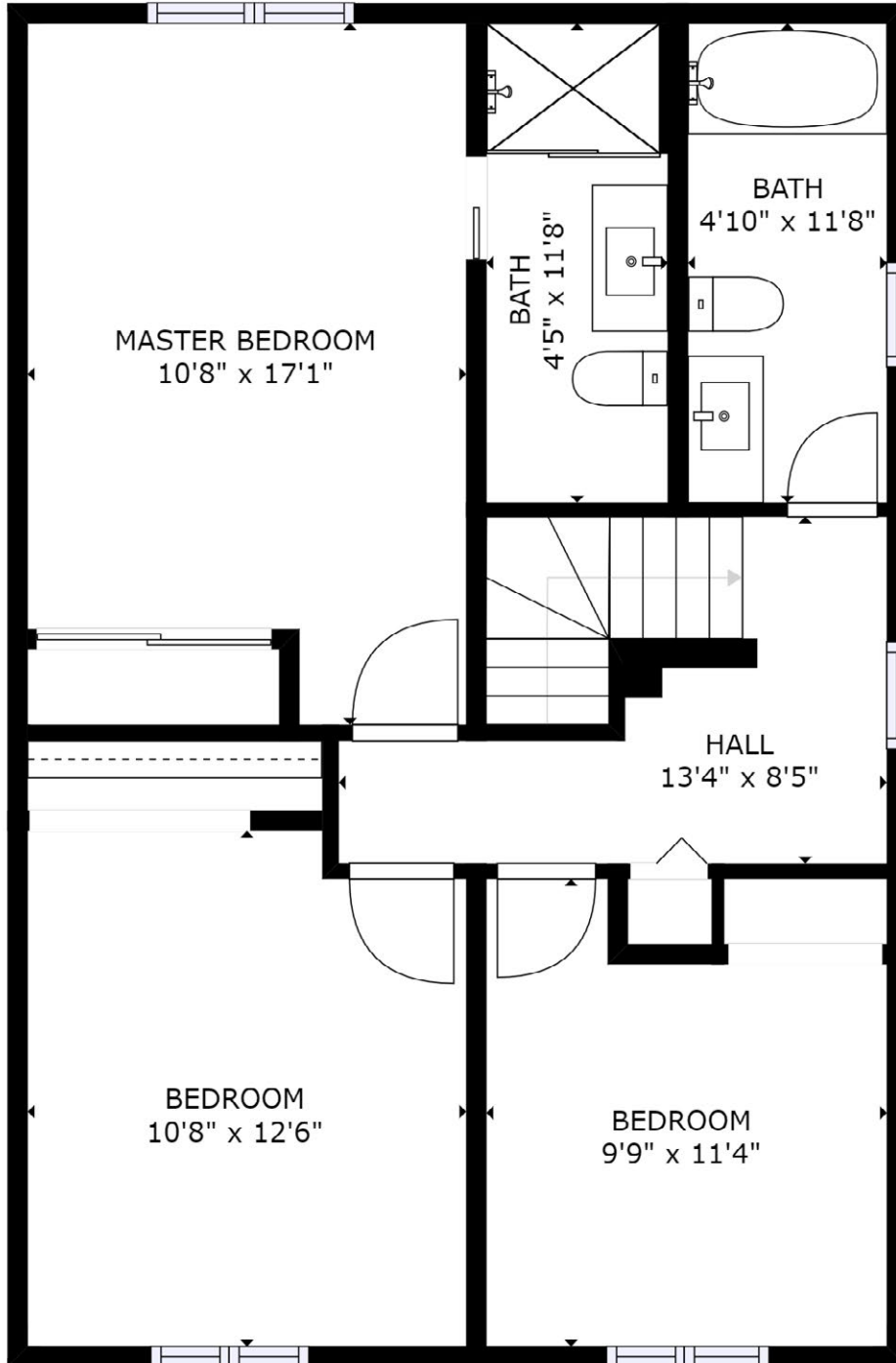
Main floor

SIZES AND DIMENSIONS ARE APPROXIMATE, ACTUAL MAY VARY.



Second floor

SIZES AND DIMENSIONS ARE APPROXIMATE, ACTUAL MAY VARY.



Basement

SIZES AND DIMENSIONS ARE APPROXIMATE, ACTUAL MAY VARY.