



Welcome to

4860 Concession Rd. 4

Goodwood



Country Tranquility Combined With Sophisticated, Professional Décor In The Charming Hamlet Of Goodwood. Immerse Yourself In This Meticulously Updated Home Situated On An Expansive 1-Acre Lot. The Heart Of The Home, A Chef's Kitchen, Boasts A 10 ft Island, Quartz Countertops, And Harvest House Custom Cabinetry. Culinary Enthusiasts Will Appreciate The Samsung Induction Stove With Double Oven Option, A Downdraft Retractable System, Built-in Kitchenaid Refrigerator, Built In Microwave—All A Seamlessly Integrated And Open To The Vaulted Great Room With A Striking Stone Gas Fireplace. Engineered Hardwood Floors Grace The Entire Space, Creating A Warm And Inviting Ambiance. Retreat To The Primary Bedroom, With A Large Dressing Room Featuring Custom Cabinetry And A Shoe Closet. Indulge In The Luxury Of A Stunning Main Floor 5-piece Washroom With Heated Floors And Restoration Hardware Vanity. The Home Boasts High End Fixtures, Faucets, Appliances, Windows, Doors, Trim, Flooring, Pot Lights, And Entry Doors —All Meticulously Updated In 2019. The Lower Level, With A Separate Entrance, Offers An Additional Bedroom With A 3-Piece Ensuite With Heated Floors. Cozy Wood Stove. Recreation Area Also Renovated 2019.

Relax And Enjoy The Inground Pool And Private Yard With Fire Pit Area. Insulated Garage Doors (2020). A Single Attached Garage And Oversized Detached 1.5-Car Garage, With a Versatile Workout Area Or Workshop (approx. 700 sq ft). Stamped Concrete In Back Patio, Walkways (2021), 21Ft Wind Sensor Automatic Awning (2021) Shingles Replaced, Ease Troughs, Fascia, Furnace, And Air Conditioner 2019. Excellent Commuter Location, Close To Go Train, Shopping, Dining. Modern Comfort And Style. This Home Is Move In Ready!



This Home Features:

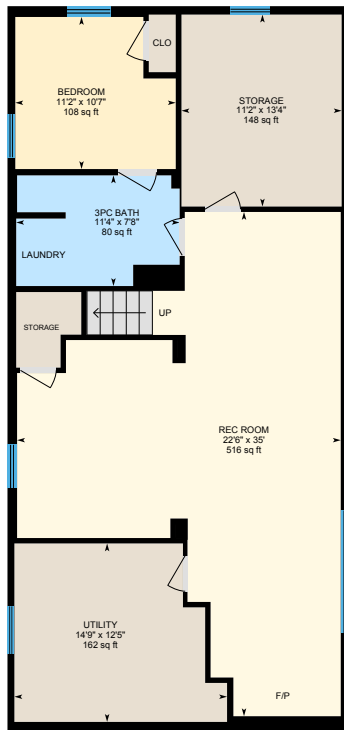
- Custom Cabinetry By Harvest House Custom Cabinetry (2019)
- Quartz Counter Tops
- 10ft Island With Samsung Induction Stove With Double Oven Option And Best Retractable Downdraft (2019) And Side Outlets With Charge ports
- Bosch Stainless Steel Dishwasher (2019)
- Built-in Stainless Steel KitchenAid Refrigerator
- Silhouette Beverage Refrigerator
- Built In Microwave (2019)
- Interior Doors, Trim, And Engineered Hardwood Flooring Throughout (2019)
- Hand-crafted Stone Gas Fireplace With Solid Wood Mantle, TV Mount And Built-in Custom Cabinets (2019)
- Pot Lights Throughout And Stunning Light Fixtures (2019)
- Updated Main Floor 5-Piece With Heated Floors, Stylish Tiling, Built-in Shelving, And Restoration Hardware Vanity (2019)
- Primary Bedroom With Adjoining Dressing Room With Shoe Closet And Custom Cabinetry (2019)
- Restoration Hardware Drapery And Hardware In Primary And Great Room (2019)
- Window Coverings (2019)
- Separate Entry To Lower Level With Quaint Mudroom Area



- Shiplap Mudroom With Exterior Doors And Windows (2019)
- Renovated Lower Level With Engineered Hardwood Flooring, Pot Lights, Additional Bedroom With Broadloom and 3 Piece Ensuite With Heated Floors (2019)
- Hardwood Staircase To Lower Level (2019)
- Lower-Level Wood Burning Stove
- Front Entry Door With Functioning Side Panel And Exterior Light Fixtures (2019)
- Insulated Garage Doors (2020)
- Windows Throughout (2019)
- 21ft Automatic Retractable Awning With Wind Sensor (11K) (2021)
- Stamped Concrete Patio, Walkway Along House To Shop And Pool Area (2021)
- Inground Pool (18 X 36.5 ft) With Pool Shed Attached To Workshop
- Waterproofed Exterior Of Basement (2019)
- Shingles Replaced, Ease Troughs And Fascia With Pot lights (2019)
- UV System And Well Pressure Tank 2019
- Forced Air Propane Furnace And Air Conditioner Owned (2019)
- Water Softener By Water Depot Owned (2019)
- Hot Water Tank - Owned 2019
- Detached Oversized 1.5 Car Garage And Workshop with Hydro (approx. 700 Sq Ft)
- Propane Tank Under Contract



MAIN FLOOR



BASEMENT



SINGLE GARAGE / WORKSHOP-GYM