



375 ELLERSLIE AVE.

North York



YOUR Community[™]
REALTY

REAL ESTATE BROKERAGE, INDEPENDENTLY OWNED AND OPERATED



4+1
Bedrooms



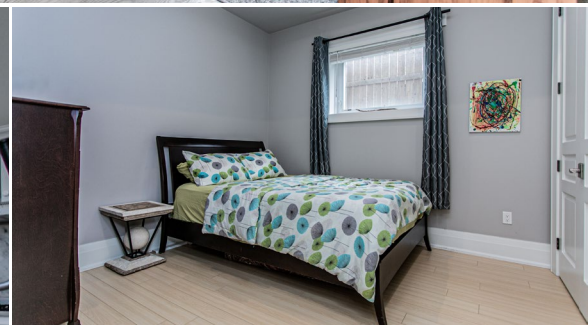
4+1
Bathrooms



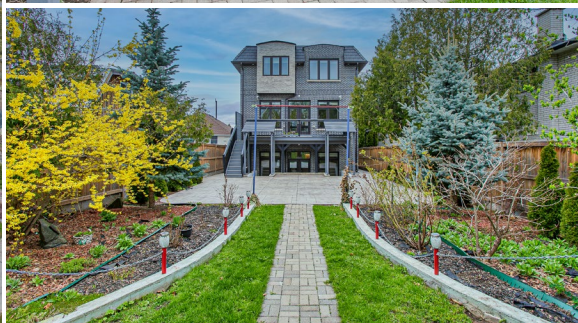
1+3
Parking
Spaces



All information provided is deemed reliable, but is not guaranteed and should be independently verified. We assume no responsibility for the accuracy of any information shown.



All information provided is deemed reliable, but is not guaranteed and should be independently verified. We assume no responsibility for the accuracy of any information shown.



ROYAL LEPAGE **YOUR Community REALTY**
REAL ESTATE BROKERAGE, INDEPENDENTLY OWNED AND OPERATED

SORUSH NOZARI
 SALES REPRESENTATIVE

DIRECT: (647) 889-4047
 WWW.SORUSHNOZARI.COM

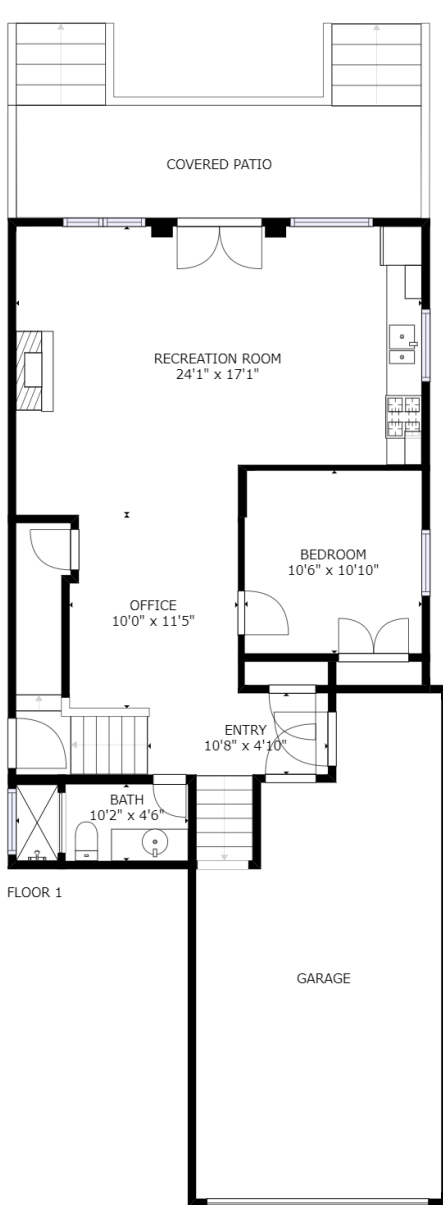
ROZA SHAFABAKHSH
 BROKER

DIRECT: (416) 706-9020
 WWW.ROZASELLSHOMES.CA

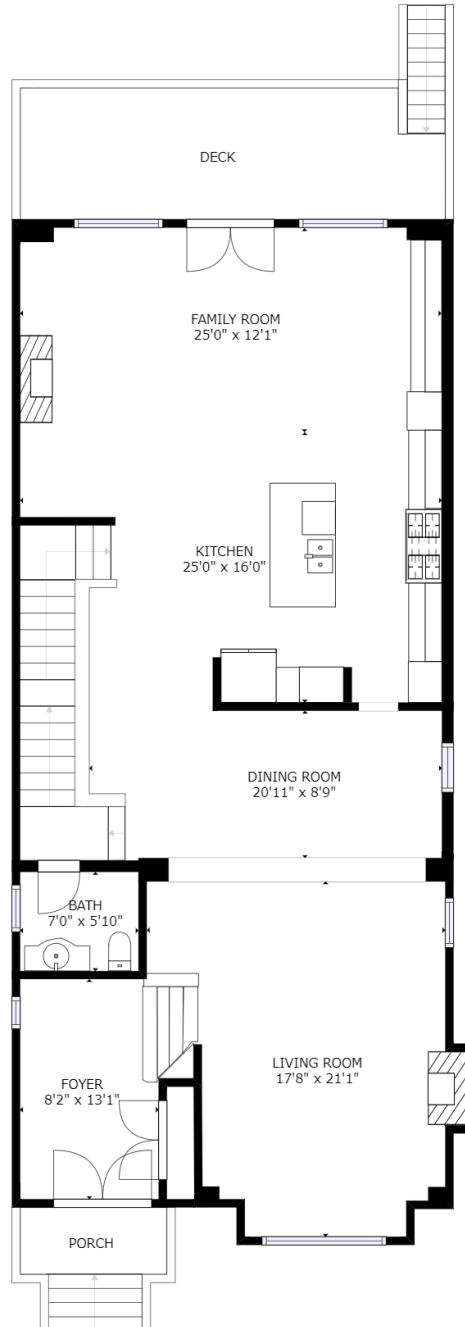


SOROUSH NOZARI
Sales Representative

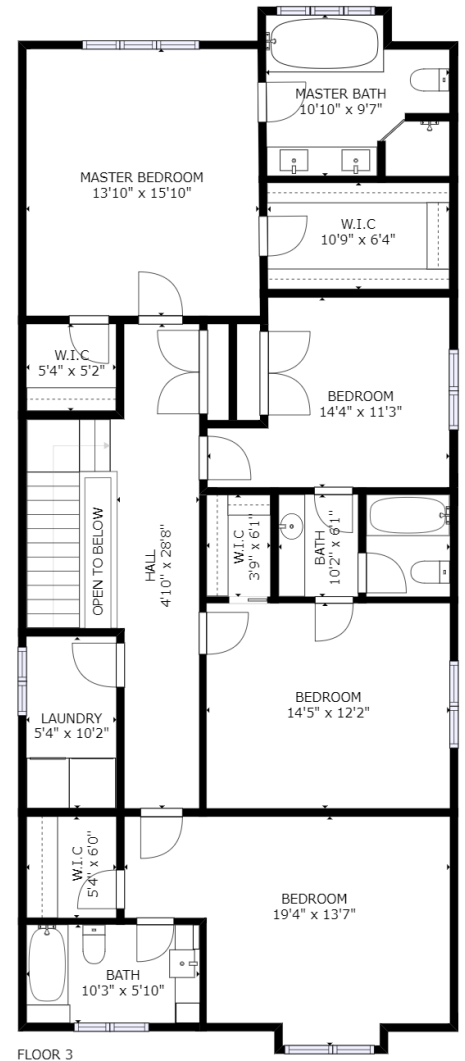
ROZA SHAFABAKHSH
Broker



Floor 1
Basement



Floor 2
Main Floor

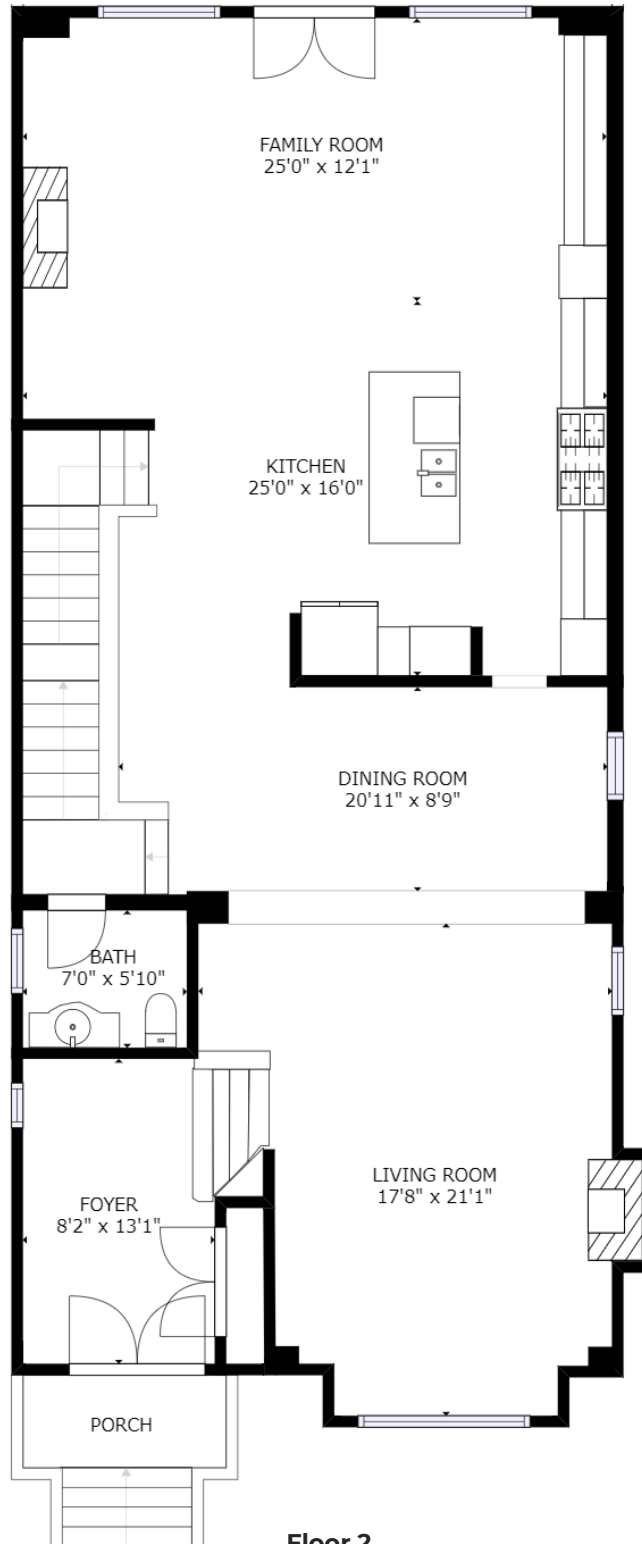


Floor 3
Second Floor



SOROUSH NOZARI
Sales Representative

ROZA SHAFABAKHSH
Broker



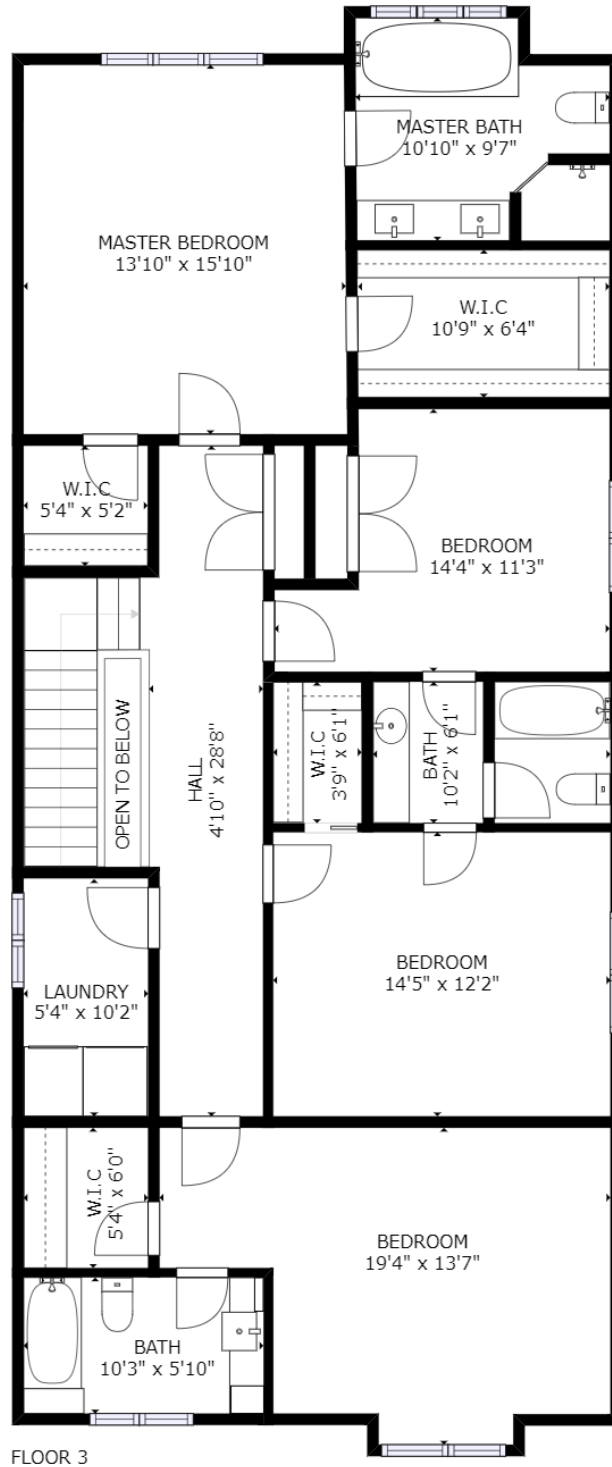
Floor 2
Main Floor

SIZES AND DIMENSIONS ARE APPROXIMATE, ACTUAL MAY VARY.



SOROUSH NOZARI
Sales Representative

ROZA SHAFABAKHSH
Broker



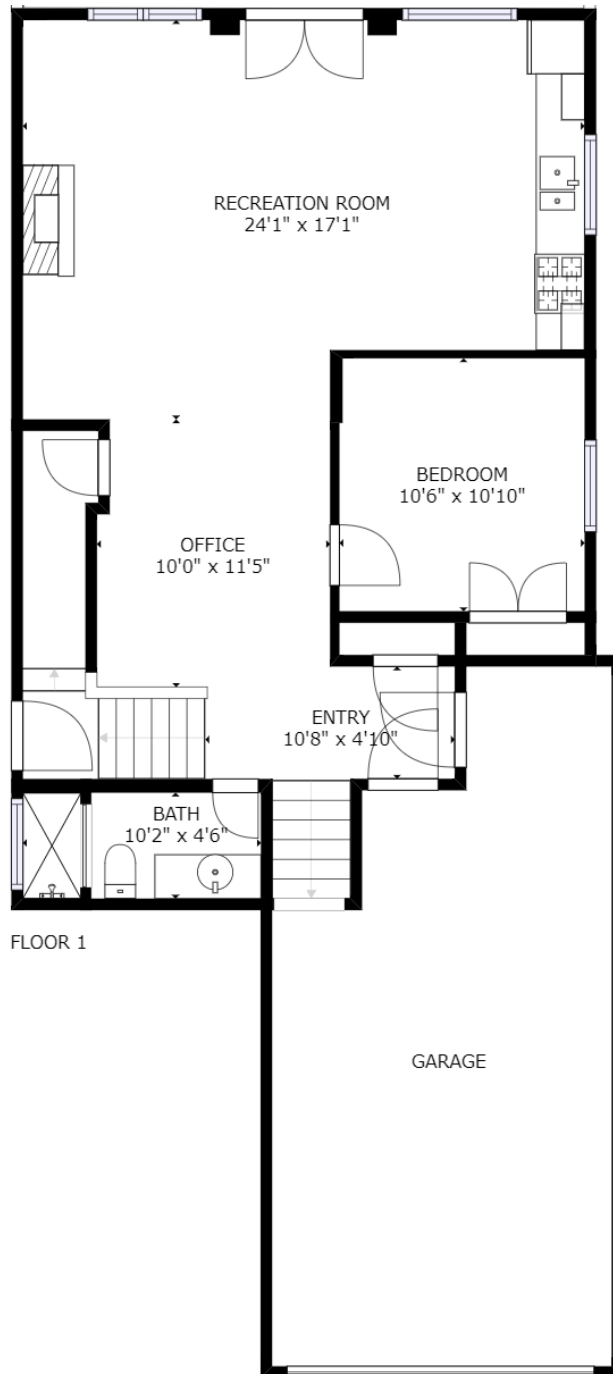
Floor 3
Second Floor

SIZES AND DIMENSIONS ARE APPROXIMATE, ACTUAL MAY VARY.



SOROUSH NOZARI
Sales Representative

ROZA SHAFABAKHSH
Broker



Floor 1
Basement Floor

SIZES AND DIMENSIONS ARE APPROXIMATE, ACTUAL MAY VARY.



SOROUSH NOZARI
Sales Representative

ROZA SHAFABAKHSH
Broker



375 Ellerslie Ave, North York, ON M2R 1B8

SCHOOLS

With so many assigned and local public schools very close to this home, your kids can thrive in the neighbourhood.



Churchill Public School

Designated Catchment School
Grades PK to 5
188 Churchill Ave

É Éléon Paul-Demers

Designated Catchment School
Grades PK to 6
100 Ravel Rd

Willowdale Middle School

Designated Catchment School
Grades 6 to 8
225 Senlac Rd

Northview Heights Secondary School

Designated Catchment School
Grades 9 to 12
550 Finch Ave W

ÉS Étienne-Brûlé

Designated Catchment School
Grades 7 to 12
300 Banbury Rd

Other Local Schools

Claude Watson School for the Arts

Grades 4 to 8
130 Doris Ave

PARKS & REC.

This home is located in park heaven, with 4 parks and 5 recreation facilities within a 20 minute walk from this address.



Ellerslie Park
499 Ellerslie Ave



6 min

Stafford Park
100 Stafford Dr



7 min

Burnett Park
352 Burnett Ave



9 min

Carscadden Greenbelt
32 Carscadden Dr



9 min

TRANSIT

Public transit is at this home's doorstep for easy travel around the city. The nearest street transit stop is only a 7 minute walk away and the nearest rail transit stop is a 22 minute walk away.



Nearest Rail Transit Stop
North York Centre Station



Nearest Street Level Transit Stop
Senlac Rd At Ellerslie Ave

7 min

SAFETY

With safety facilities in the area, help is always close by. Facilities near this home include a fire station, a police station, and a hospital within 5.52km.



North York General Hospital
4001 Leslie St



Fire Station
5700 Bathurst St



Police Station
30 Ellerslie Ave

CONVENIENCE

This home is located near everyday amenities to make your daily errands easier.



Coffee



Gym



Grocery



Gas Station



SOROUSH NOZARI
Sales Representative

ROZA SHAFABAKHSH
Broker



375 Eilerslie Ave, North York, ON M2R 1B8

PUBLIC SCHOOLS

Your neighbourhood is part of a community of Public Schools offering Elementary, Middle, and High School programming.

Churchill Public School

Designated Catchment School
Grades PK to 5
188 Churchill Ave

É Élé Paul-Demers

Designated Catchment School
Grades PK to 6
100 Ravel Rd

Willowdale Middle School

Designated Catchment School
Grades 6 to 8
225 Senlac Rd

Northview Heights Secondary School

Designated Catchment School
Grades 9 to 12
550 Finch Ave W

ÉS Étienne-Brûlé

Designated Catchment School
Grades 7 to 12
300 Banbury Rd

Other Local Schools

Claude Watson School for the Arts

Grades 4 to 8
130 Doris Ave

ALTERNATIVE & SPECIAL SCHOOLS

Nearby alternative and special education schools include:

North West Year Round Alternative Centre

Grades 9 to 12
425 Patricia Ave

Drewry Secondary School

Grades 9 to 12
70 Drewry Ave



CATHOLIC SCHOOLS

Your neighbourhood is part of a community of Catholic Schools offering Elementary, Middle, and High School programming.

ÉÉC Saint-Noël-Chabanel-Toronto

Grades PK to 6 (Assigned)
30 Thistle Down Boulevard

St. Antoine Daniel Catholic School

Grades PK to 8 (Assigned)
160 Finch Ave W

ÉSC Monseigneur-de-Charbonnel

Grades 7 to 12 (Assigned)
110 Drewry Ave

St. Cyril Catholic School

Grades PK to 8
18 Kempford Blvd

PRIVATE SCHOOLS

The private schools nearest to you are:



Torah High - Prosserman JCC

Grades 9 to 12
4588 Bathurst St

Prestige School

Grades K to 12
21 Eddfield Avenue

Associated Hebrew Schools of Toronto

Grades PK to 8
252 Finch Avenue West

Bnei Akiva Schools - Ulpanat Orot Girls' High School

Grades 9 to 12
45 Canyon Ave

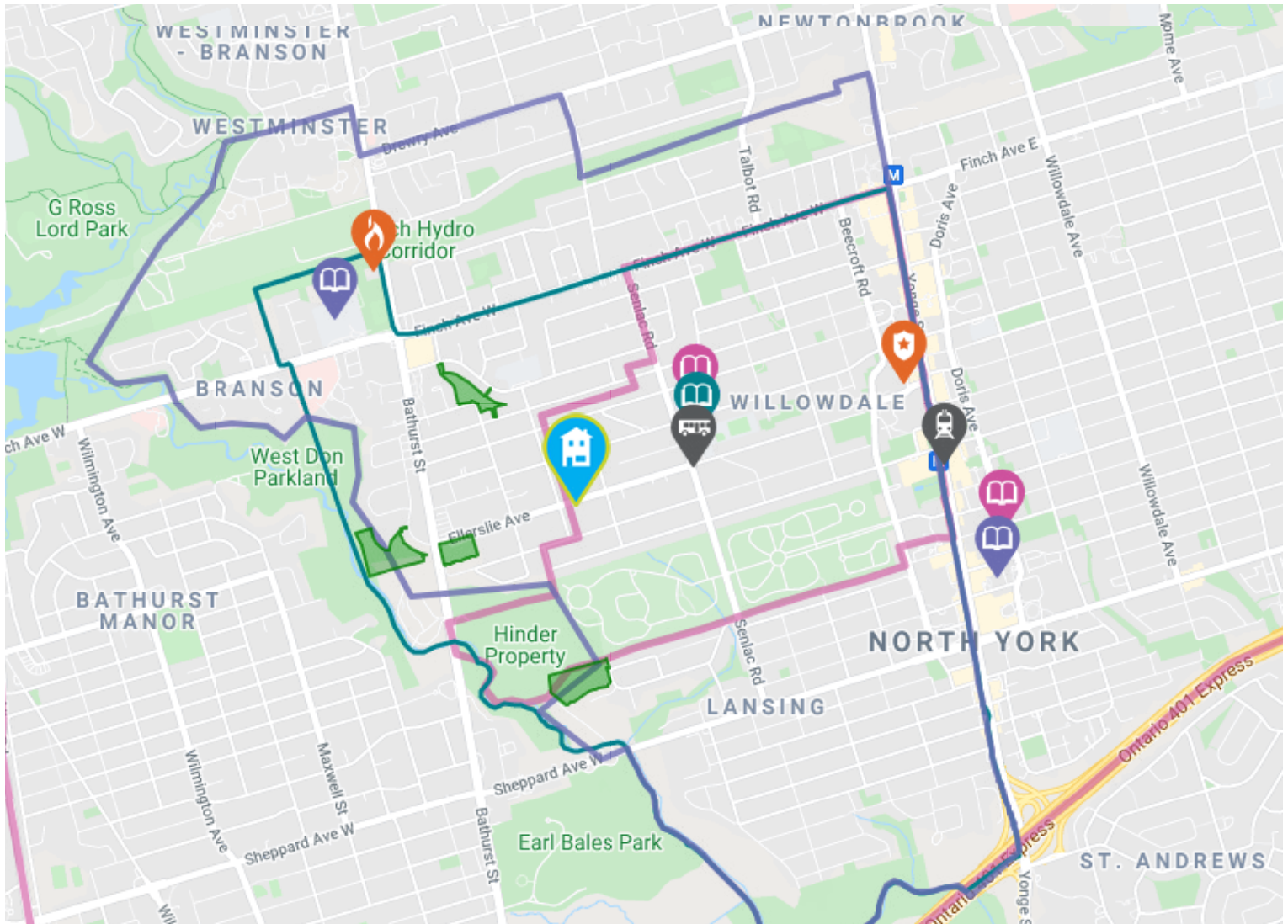


SOROUSH NOZARI
Sales Representative

ROZA SHAFABAKHSH
Broker



375 Ellerslie Ave, North York, ON M2R 1B8



- | | | | | |
|----------------------------|------------------------|----------------------|---------|-------------|
| Elementary Schools | Middle Schools | High Schools | Transit | Safety |
| Elementary Attendance Zone | Middle Attendance Zone | High Attendance Zone | Parks | Convenience |

HoodQ

Disclaimer: These materials have been prepared for info@virtualmax.ca and are not intended to solicit buyers or sellers currently under contract with a brokerage. By accessing this information you have agreed to our terms of service, which are hereby incorporated by reference. This information may contain errors and omissions. You are not permitted to rely on the contents of this information and must take steps to independently verify its contents with the appropriate authorities (school boards, governments etc.). As a recipient of this information, you agree not to hold us, our licensors or the owners of the information liable for any damages, howsoever caused.