



287 Murlock Heights

Milton



3

Bedrooms



3

Bathrooms



3

Parking
Spaces



Beautiful Hawthorne South Village by Mattamy End Unit Freehold Townhome for sale. Less than 5 years old. Open concept with functional layout. Walking distance to Elementary and High school, shopping plaza and bus stops. Near place of worship, new Fire Station, and Milton District Hospital. Indoor access to Extra deep garage. Driveway for 2 cars. Main Floor Laundry. Hardwood stairs and dark laminate and large balcony.



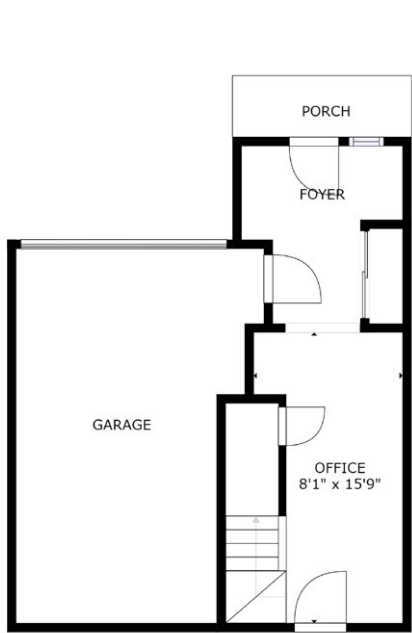
All information provided is deemed reliable, but is not guaranteed and should independently verified. we assume no responsibility for the accuracy of any information shown.

Extras:

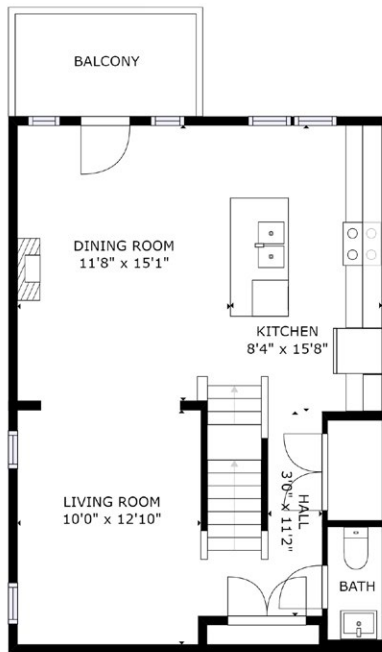
Energy Star Qualified home certified with Nest Thermostat, quartz countertops in kitchen, porcelain backsplash, LED lighting throughout with pot lights in the Living Room, Dining Room, and Kitchen with beautiful crown moulding. All stainless steel appliances, custom window blinds, front load washer/dryer, double door pantry.



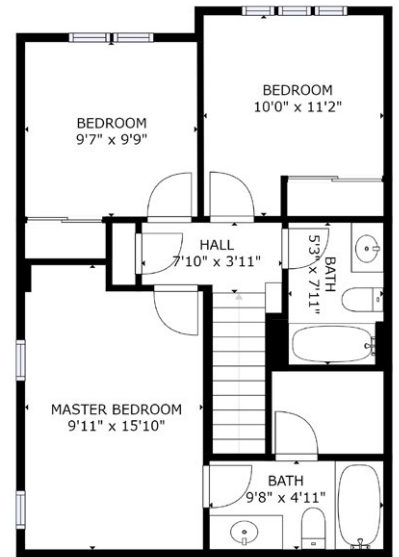
All information provided is deemed reliable, but is not guaranteed and should independently verified. we assume no responsibility for the accuracy of any information shown.



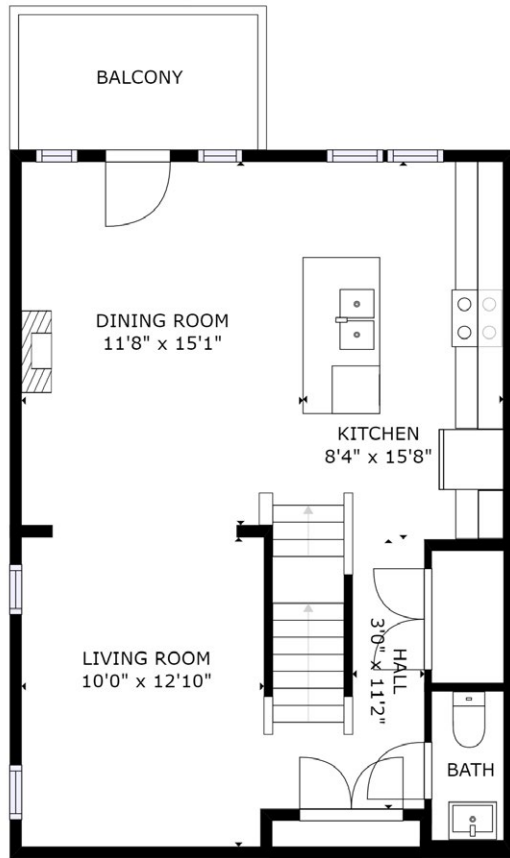
Basement



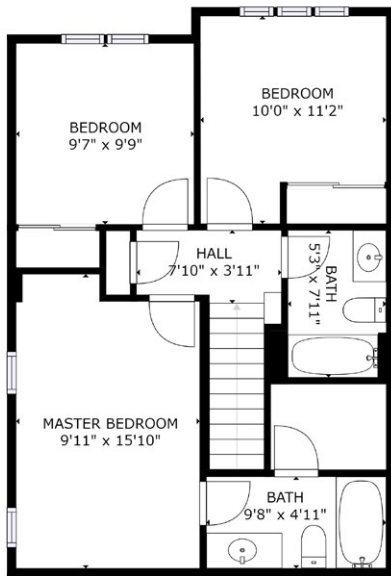
Main Floor



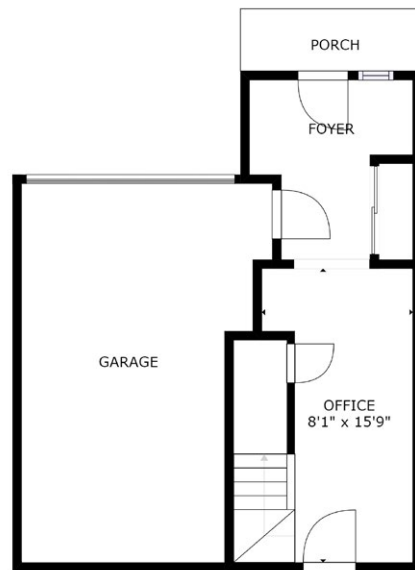
Second Floor



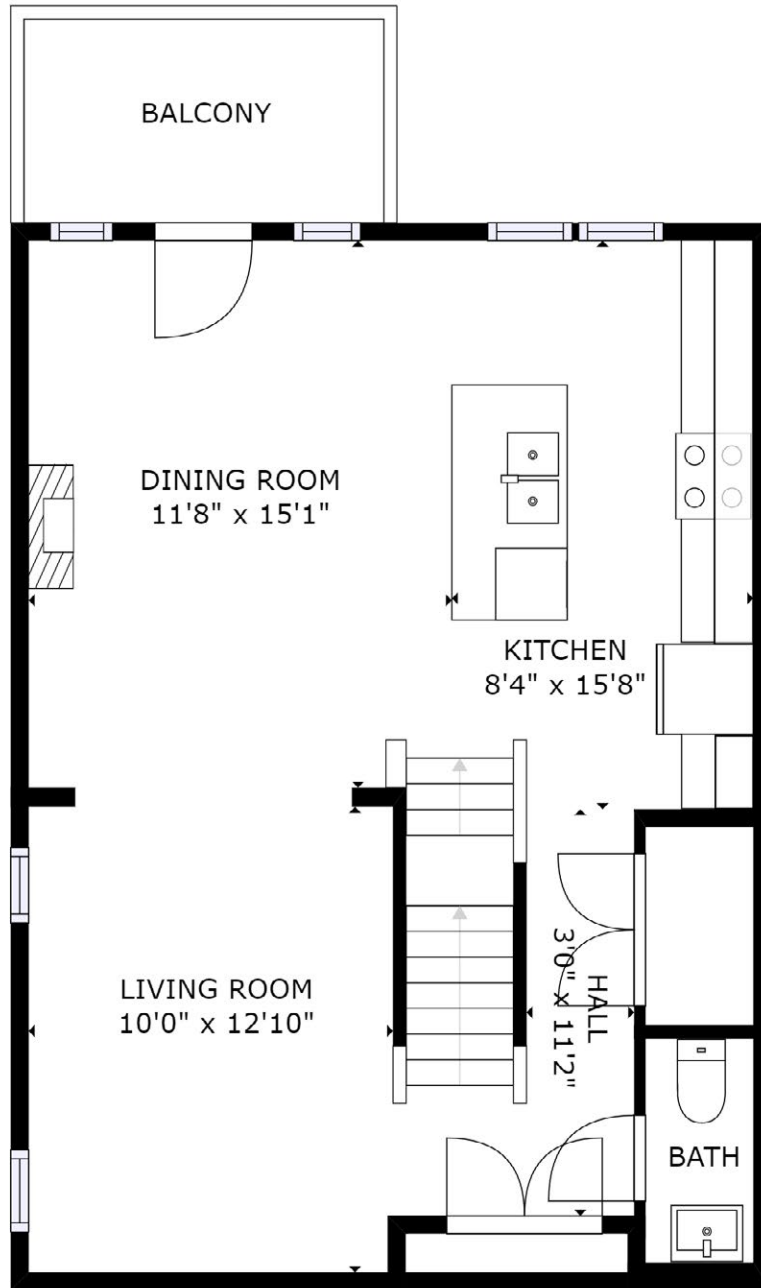
Main Floor



Second Floor

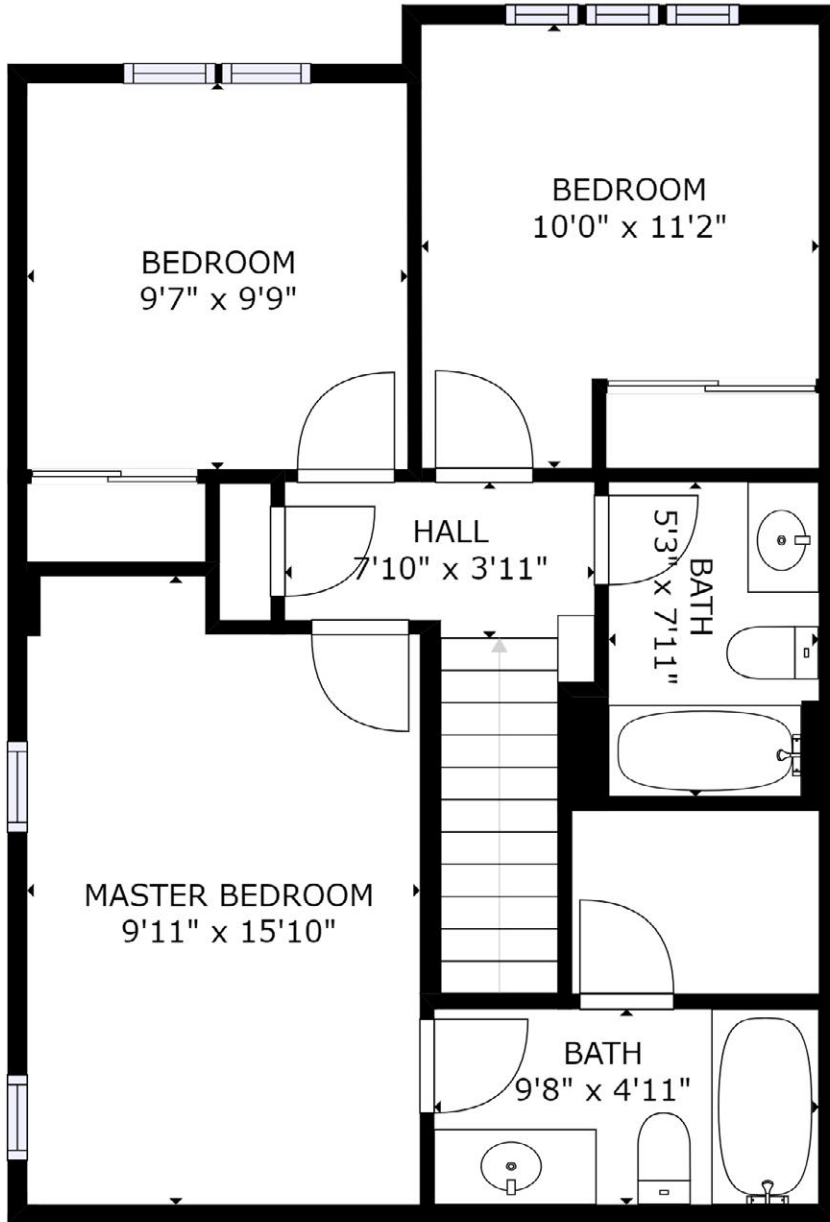


Basement



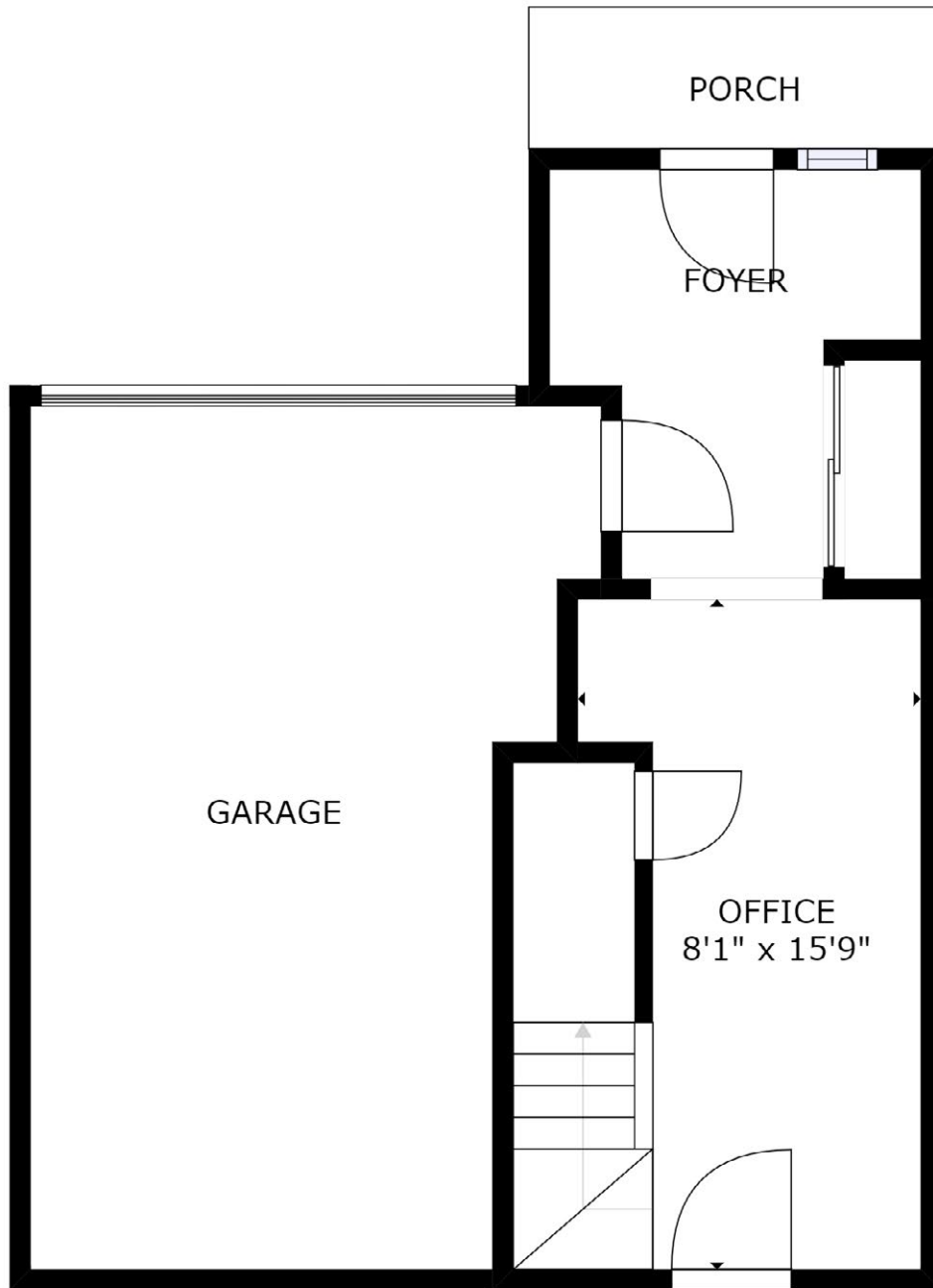
Main Floor

SIZES AND DIMENSIONS ARE APPROXIMATE, ACTUAL MAY VARY.



Second Floor

SIZES AND DIMENSIONS ARE APPROXIMATE, ACTUAL MAY VARY.



Basement

SIZES AND DIMENSIONS ARE APPROXIMATE, ACTUAL MAY VARY.

287 Murlock Heights, Milton, ON L9T 7K6

SCHOOLS

With good assigned and local public schools very close to this home, your kids can thrive in the neighbourhood.



Boyne PS

Designated Catchment School
Grades PK to 8
1110 Farmstead Dr

ÉÉ Dyane-Adam

Designated Catchment School
Grades K to 6
500 Cedar Hedge Rd

Milton DHS

Designated Catchment School
Grades 9 to 12
396 Williams Ave

ÉS Gaétan Gervais

Designated Catchment School
Grades 7 to 12
1055 McCraney St E

PARKS & REC.

This home is located in park heaven, with 4 parks and a long list of recreation facilities within a 20 minute walk from this address.



Leiterman Park

284 Leiterman Dr



6 min

Sunny Mount Park

255 Ruhl Drive



12 min

Willmott Neighbourhood Park

Asleton Blvd



16 min

FACILITIES WITHIN A 20 MINUTE WALK

- | | |
|--------------------|---------------------|
| 1 Dog Park | 3 Playgrounds |
| 3 Sports Fields | 2 Basketball Courts |
| 1 Splash Pad | 2 Trails |
| 1 Community Garden | 1 Picnic Facilities |

TRANSIT

Public transit is at this home's doorstep for easy travel around the city. The nearest street transit stop is only a 3 minute walk away and the nearest rail transit stop is a 54 minute walk away.

 **Nearest Rail Transit Stop**
Milton GO

 **Nearest Street Level Transit Stop**
Louis St Laurent / Farmstead

 3 min

SAFETY

With safety facilities in the area, help is always close by. Facilities near this home include a hospital, a fire station, and a police station within 3.57km.

 **Halton Healthcare - Milton District Hospital**
725 Bronte St S

 **Fire Station**
610 Savoline Boulevard

 **Police Station**
490 Childs Drive

CONVENIENCE

This home is located near everyday amenities to make your daily errands easier.

 **Coffee**

 **Gym**

 **Grocery**

 **Gas Station**

287 Murlock Heights, Milton, ON L9T 7K6

PUBLIC SCHOOLS

Your neighbourhood is part of a community of Public Schools offering Elementary, Middle, and High School programming.

Boyne PS

Designated Catchment School
Grades PK to 8
1110 Farmstead Dr

Milton DHS

Designated Catchment School
Grades 9 to 12
396 Williams Ave

ÉE Dyane-Adam

Designated Catchment School
Grades K to 6
500 Cedar Hedge Rd

ÉS Gaétan Gervais

Designated Catchment School
Grades 7 to 12
1055 McCraney St E

ALTERNATIVE & SPECIAL SCHOOLS

Nearby alternative and special education schools include:

EC Drury/Trillium Demonstration School (Elementary)

Grades 4 to 8
347 Ontario St S

EC Drury/Trillium Demonstration School (High)

Grades 9 to 12
347 Ontario St S



CATHOLIC SCHOOLS

Your neighbourhood is part of a community of Catholic Schools offering Elementary, Middle, and High School programming.

St Scholastica Catholic ES

Grades PK to 8 (Assigned)
170 Whitlock Ave

ÉÉC Sainte-Anne

Grades PK to 6 (Assigned)
1150 Ferguson Dr

St Francis Xavier Catholic SS

Grades 9 to 12 (Assigned)
1145 Bronte Street South

ÉSC Sainte-Trinité

Grades 7 to 12 (Assigned)
2600 Grand Oak Trail

PRIVATE SCHOOLS

The private schools nearest to you are:



Montessori School of Milton

Grades PK to 3
336 Bronte St S

Stirling Montessori Academy

Grades PK to 3
123 Main St E

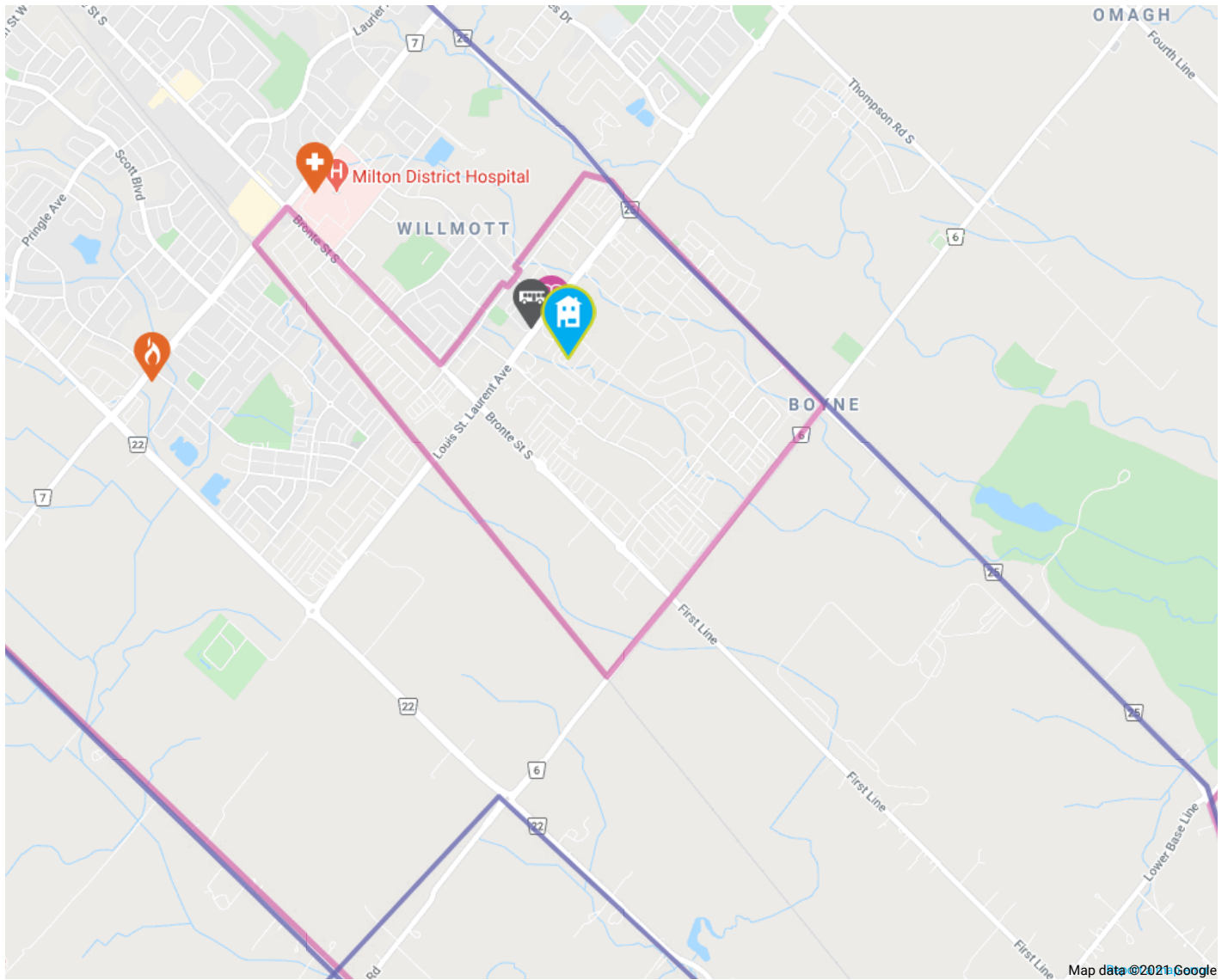
Milton Christian School











Grades PK to 8
45 Bruce St

Tarbiyah Elementary School

Grades PK to 6
89 Ontario St N

287 Murlock Heights, Milton, ON L9T 7K6



- | | | | | |
|--|--|--|---|---|
|  Elementary Schools |  Middle Schools |  High Schools |  Transit |  Safety |
|  Elementary Attendance Zone |  Middle Attendance Zone |  High Attendance Zone |  Parks |  Convenience |