



23 FESTIVAL COURT

Sharon



- 
4
Bedrooms
- 
3
Bathrooms
- 
1
Parking Space



FARHAD FATHI
Sales Representative

23 Festival Court
Sharon

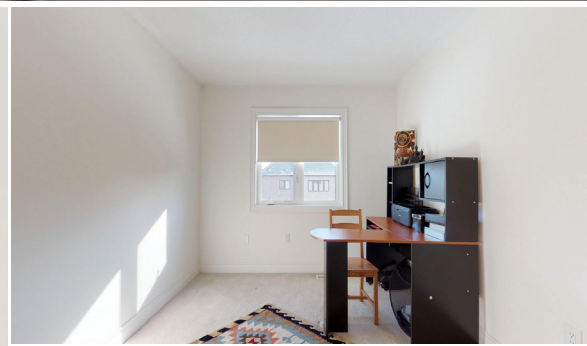
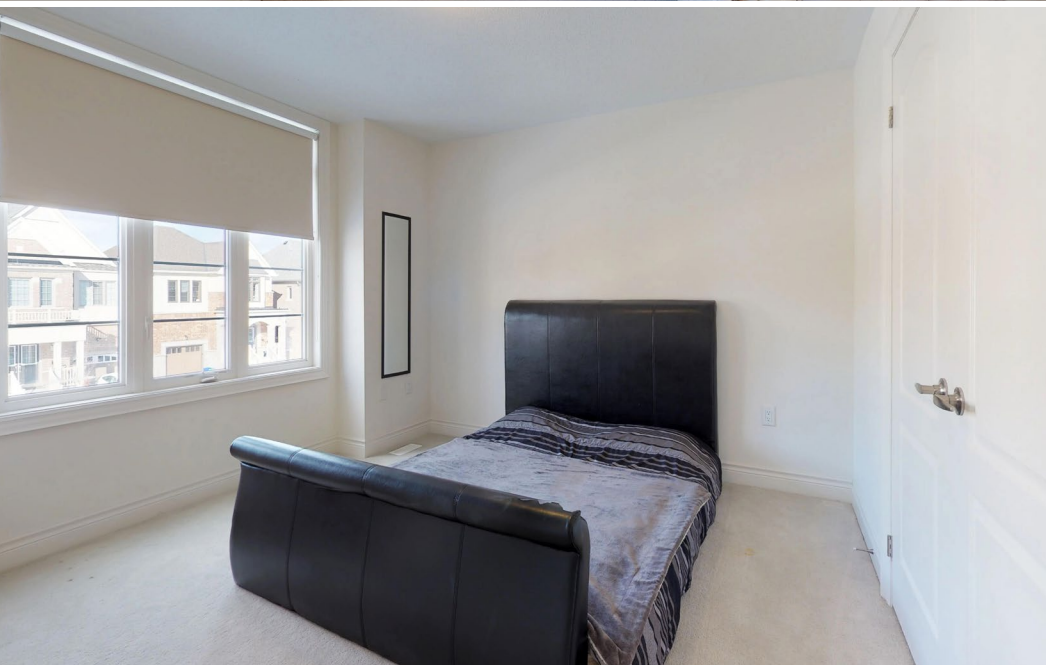


All information provided is deemed reliable, but is not guaranteed and should be independently verified. We assume no responsibility for the accuracy of any information shown.



FARHAD FATHI
Sales Representative

23 Festival Court
Sharon



All information provided is deemed reliable, but is not guaranteed and should be independently verified. We assume no responsibility for the accuracy of any information shown.



Farhad Fathi

Sales Representative

Direct: **(416) 832-8008**

fathi8008@gmail.com



YORK NATIONAL
REALTY INC., BROKERAGE

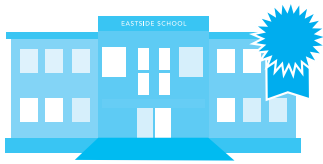


FARHAD FATHI
Sales Representative

23 Festival Court
Sharon

SCHOOLS

With excellent assigned and local public schools near this home, your kids will get a great education in the neighbourhood.



Sharon PS

Designated Catchment School
Grades PK to 8
18532 Leslie St

Poplar Bank PS

Designated Catchment School
Grades PK to 8
400 Woodspring Ave

ÉS Norval-Morrisseau

Designated Catchment School
Grades 7 to 12
51 Wright St

PARKS & REC.

Fun is easy to find at the parks near this home. There are lots of opportunities for sports, relaxation and play in nearby parks and recreation facilities.



East Gwillimbury Sports Complex

1914B Mt Albert Rd



19 min

Shawneeki Golf Club

18543 Woodbine Avenue



FACILITIES WITHIN A 20 MINUTE WALK

- 1 Playground
- 1 Sports Field
- 2 Ball Diamonds
- 2 Rinks
- 1 Arena

TRANSIT

For convenient travel around the city, public transit is accessible from this home.

Nearest Rail Transit Stop
East Gwillimbury GO

Nearest Street Level Transit Stop
Leslie St / Farr Av

SAFETY

With safety facilities in the area, help is always close by. Facilities near this home include a fire station, a hospital, and a police station within 7.59km.

Southlake Regional Health Centre

596 Davis Dr

Fire Station

1590 Queensville Side Rd

Police Station

240 Prospect Street

CONVENIENCE

This home is located near everyday amenities to make your daily errands easier.

Coffee

Gym

Grocery

Gas Station



FARHAD FATHI
Sales Representative

23 Festival Court
Sharon

PUBLIC SCHOOLS

Your neighbourhood is part of a community of Public Schools offering Elementary, Middle, and High School programming.

Sharon PS

Designated Catchment School
Grades PK to 8
18532 Leslie St

Poplar Bank PS

Designated Catchment School
Grades PK to 8
400 Woodspring Ave

ÉS Norval-Morrisseau

Designated Catchment School
Grades 7 to 12
51 Wright St

ALTERNATIVE & SPECIAL SCHOOLS

Nearby alternative and special education schools include:

Above and Beyond Learning Experience

Grades 1 to 12
1220 Stellar Dr

Above and Beyond Learning Experience

Grades 1 to 12
1220 Stellar Dr



CATHOLIC SCHOOLS

Your neighbourhood is part of a community of Catholic Schools offering Elementary, Middle, and High School programming.

Our Lady of Good Counsel Catholic ES

Grades PK to 8 (Assigned)
53 Morton Ave

ÉÉC Jean-Béliveau

Grades PK to 6 (Assigned)
19300 2nd Concession Rd

Sacred Heart Catholic HS

Grades 9 to 12 (Assigned)
908 Lemar Rd

ÉSC Renaissance

Grades 7 to 12 (Assigned)
700 Bloomington Rd

PRIVATE SCHOOLS

The private schools nearest to you are:



La Maison Montessori House

Grades PK to 8
1205 Stellar Dr

Newmarket Montessori & Christian Academy

Grades PK to 8
1140 Gorham St

Newmarket & District Christian Academy

Grades K to 8
221 Carlson Dr

Innova Academy

Grades PK to 8
1000 Gorham St



FARHAD FATHI
Sales Representative

23 Festival Court
Sharon



- Elementary Schools
- Middle Schools
- High Schools
- Transit
- Safety
- Elementary Attendance Zone
- Middle Attendance Zone
- High Attendance Zone
- Parks
- Convenience