



Welcome to
12 Pembury Ave.
The Bridle Path, Toronto




4
Bedrooms

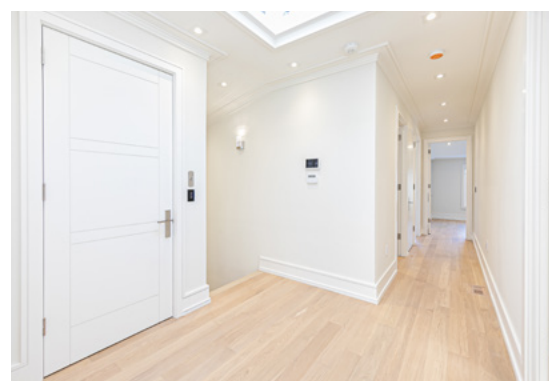

7
Bathrooms

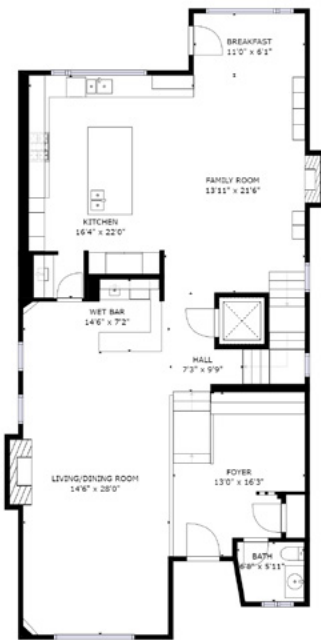


12 Pembury Ave.
The Bridle Path, Toronto



12 Pembury Ave.
The Bridle Path, Toronto





First Floor



Second Floor



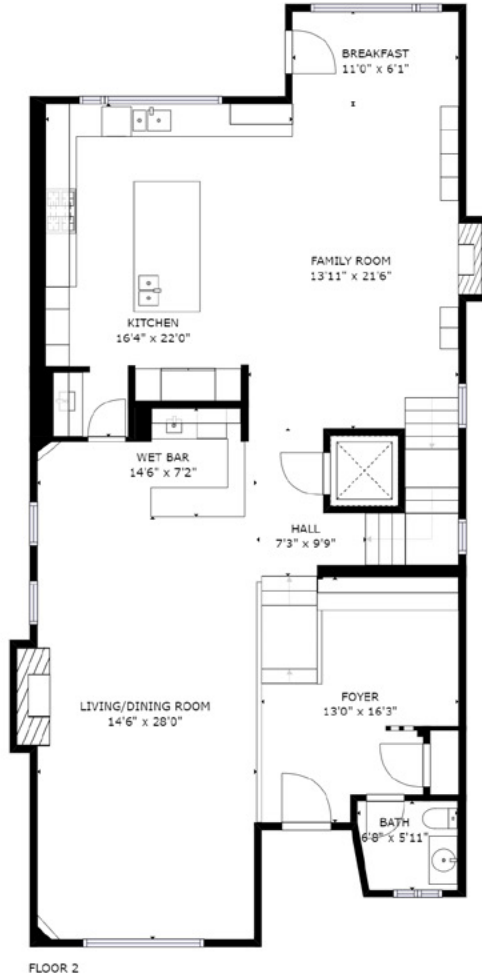
Basement

Garage: 375 sq. ft.
 Basement: 1460 sq. ft.
 First Floor: 1805 sq. ft.
 Second Floor: 1869 sq. ft.
 Total Living area (1st & 2nd floor): 3,675 sq. ft.

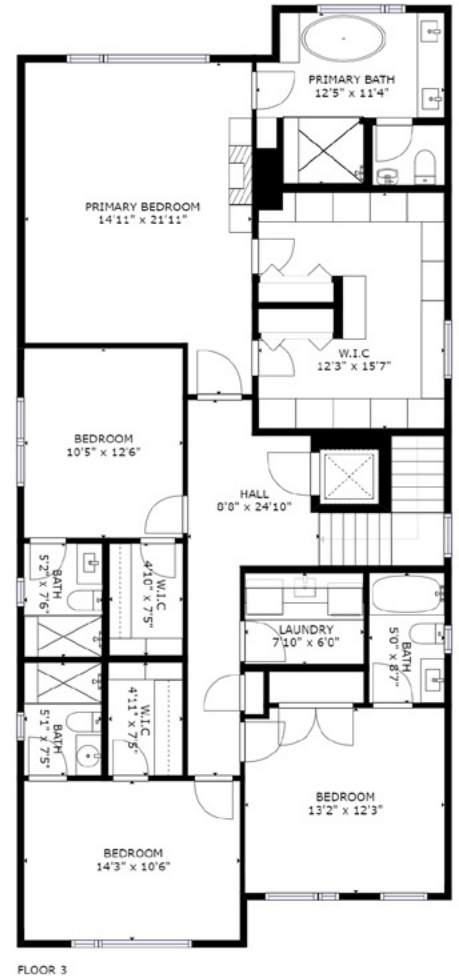
12 Pembury Ave.
The Bridle Path, Toronto



Basement



First Floor



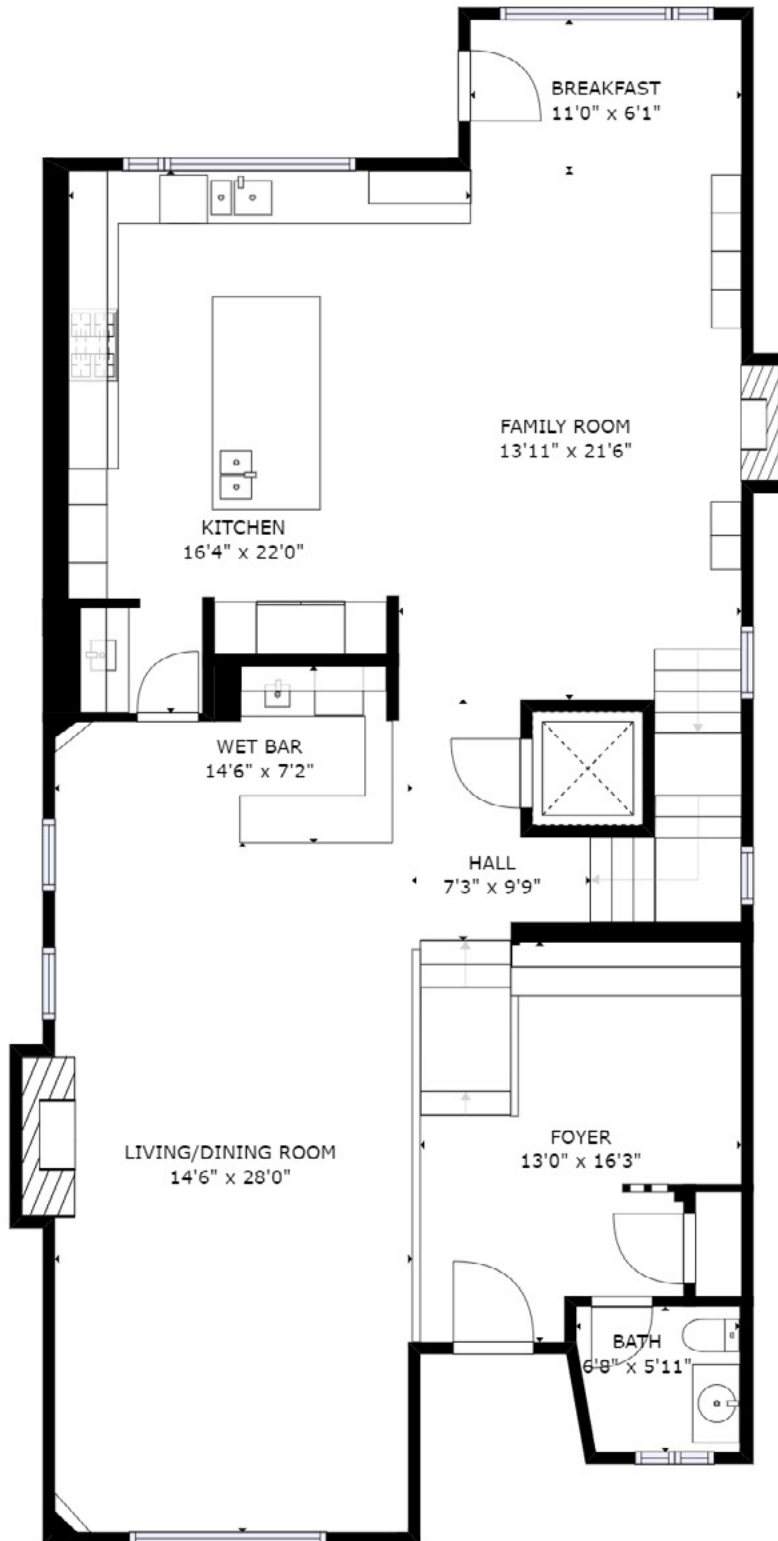
Second Floor

Garage: 375 sq. ft.
Basement: 1460 sq. ft.
First Floor: 1805 sq. ft.
Second Floor: 1869 sq. ft.

Total Living area (1st & 2nd floor): 3,675 sq. ft.

Sizes and Dimensions are approximate, actual may vary.

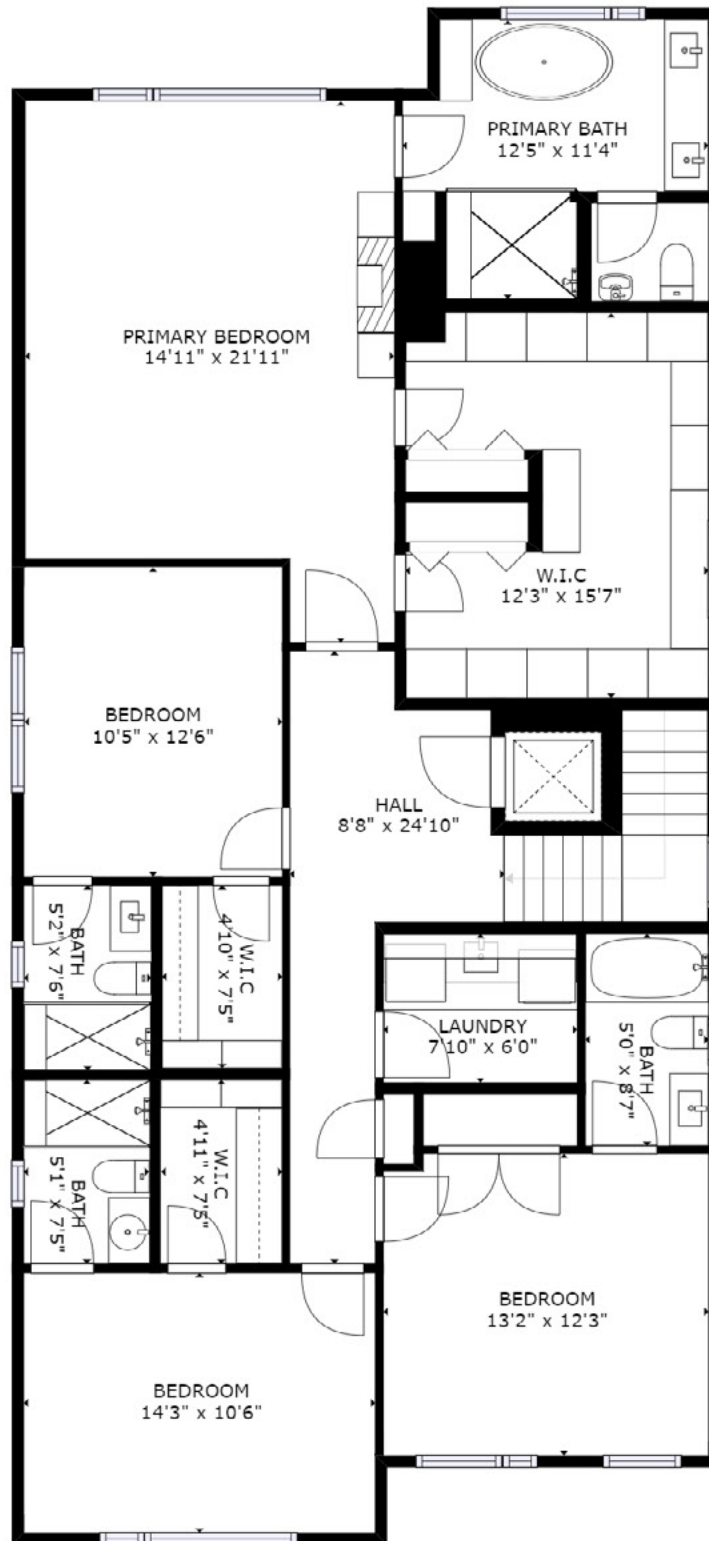
12 Pembury Ave.
The Bridle Path, Toronto



First Floor: 1805 sq. ft.

Sizes and Dimensions are approximate, actual may vary.

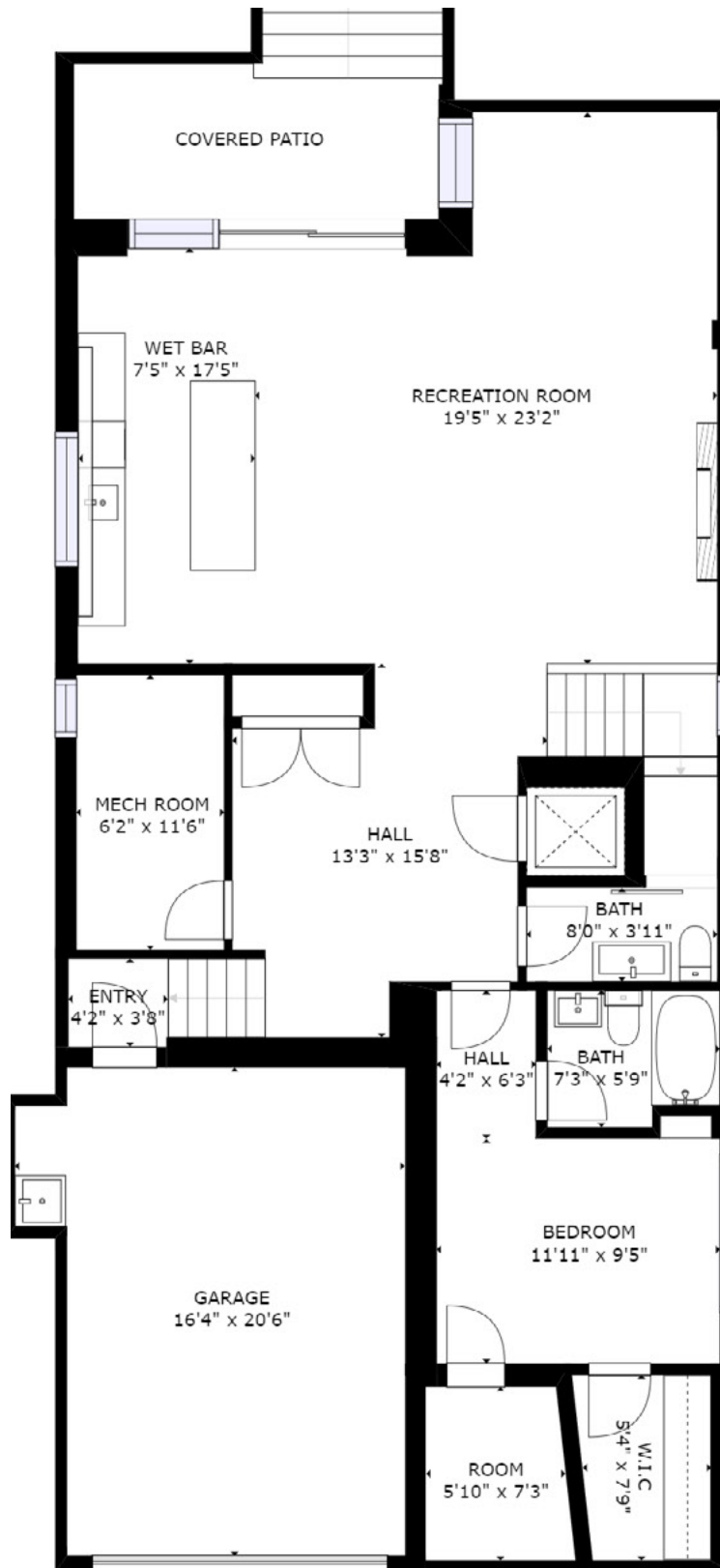
12 Pembury Ave.
The Bridle Path, Toronto



Second Floor: 1869 sq. ft.

Sizes and Dimensions are approximate, actual may vary.

12 Pembury Ave.
The Bridle Path, Toronto



Basement: 1460 sq. ft.

Garage: 375 sq. ft.

Sizes and Dimensions are approximate, actual may vary.

SCHOOLS

With excellent assigned and local public schools very close to this home, your kids will get a great education in the neighbourhood.



Blythwood Junior Public School

Designated Catchment School
Grades PK to 6
2 Strathgowan Crescent

É ÉléM Jeanne-Lajoie

Designated Catchment School
Grades PK to 6
150 Carnforth Rd

ÉS Étienne-Brûlé

Designated Catchment School
Grades 7 to 12
300 Banbury Rd

Glenview Senior Public School

Designated Catchment School
Grades 7 to 8
401 Rosewell Ave

Northern Secondary School

Designated Catchment School
Grades 9 to 12
851 Mt Pleasant Rd

York Mills Collegiate Institute

Designated Catchment School
Grades 9 to 12
490 York Mills Rd

Other Local Schools

John Fisher Junior Public School

Grades K to 6
40 Erskine Ave

PARKS & REC.

This home is located in park heaven, with 4 parks and a long list of recreation facilities within a 20 minute walk from this address.



Cheltenham Park

43 Mildenhall Rd



Sunnybrook Park

1132 Leslie



Wanless Park

250 Wanless Ave



FACILITIES WITHIN A 20 MINUTE WALK

- | | |
|---------------------|--------------------|
| 1 Dog Park | 1 Playground |
| 1 Wading Pool | 14 Sports Fields |
| 5 Tennis Courts | 1 Basketball Court |
| 3 Ball Diamonds | 3 Trails |
| 1 Clubhouse | 1 Equestrian |
| 2 Picnic Facilities | |

TRANSIT

Public transit is at this home's doorstep for easy travel around the city. The nearest street transit stop is only a 2 minute walk away and the nearest rail transit stop is a 22 minute walk away.

Nearest Rail Transit Stop

Lawrence Station

Nearest Street Level Transit Stop

Bayview Ave At Wood Ave



SAFETY

With safety facilities in the area, help is always close by. Facilities near this home include a hospital, a fire station, and a police station within 2.7km.

Sunnybrook Health Sciences Centre - Bayview Campus

2075 Bayview Ave

Fire Station

3135 Yonge St

Police Station

75 Eglinton Ave W

CONVENIENCE

This home is located near everyday amenities to make your daily errands easier.



PUBLIC SCHOOLS

Your neighbourhood is part of a community of Public Schools offering Elementary, Middle, and High School programming.

Blythwood Junior Public School

Designated Catchment School
Grades PK to 6
2 Strathgowan Crescent

É ÉléM Jeanne-Lajoie

Designated Catchment School
Grades PK to 6
150 Carnforth Rd

Glenview Senior Public School

Designated Catchment School
Grades 7 to 8
401 Rosewell Ave

Northern Secondary School

Designated Catchment School
Grades 9 to 12
851 Mt Pleasant Rd

York Mills Collegiate Institute

Designated Catchment School
Grades 9 to 12
490 York Mills Rd

Other Local Schools

John Fisher Junior Public School

Grades K to 6
40 Erskine Ave

ALTERNATIVE & SPECIAL SCHOOLS

Nearby alternative and special education schools include:

Sunny View Junior and Senior Public School

Grades PK to 8
450 Blythwood Rd

Bloorview School Authority

Grades PK to 8
150 Kilgour Rd



CATHOLIC SCHOOLS

Your neighbourhood is part of a community of Catholic Schools offering Elementary, Middle, and High School programming.

Blessed Sacrament Catholic School

Grades PK to 8 (Assigned)
24 Bedford Park Ave

ÉÉC Sainte-Madeleine

Grades PK to 6 (Assigned)
1 Ness Dr

ÉSC Monseigneur-de-Charbonnel

Grades 7 to 12 (Assigned)
110 Drewry Ave

Northmount School

Grades PK to 8
26 Mallard Road

PRIVATE SCHOOLS

The private schools nearest to you are:



Toronto French School

Grades PK to 12
306 Lawrence Avenue East

Crestwood School

Grades PK to 6
411 Lawrence Avenue East

Crescent School

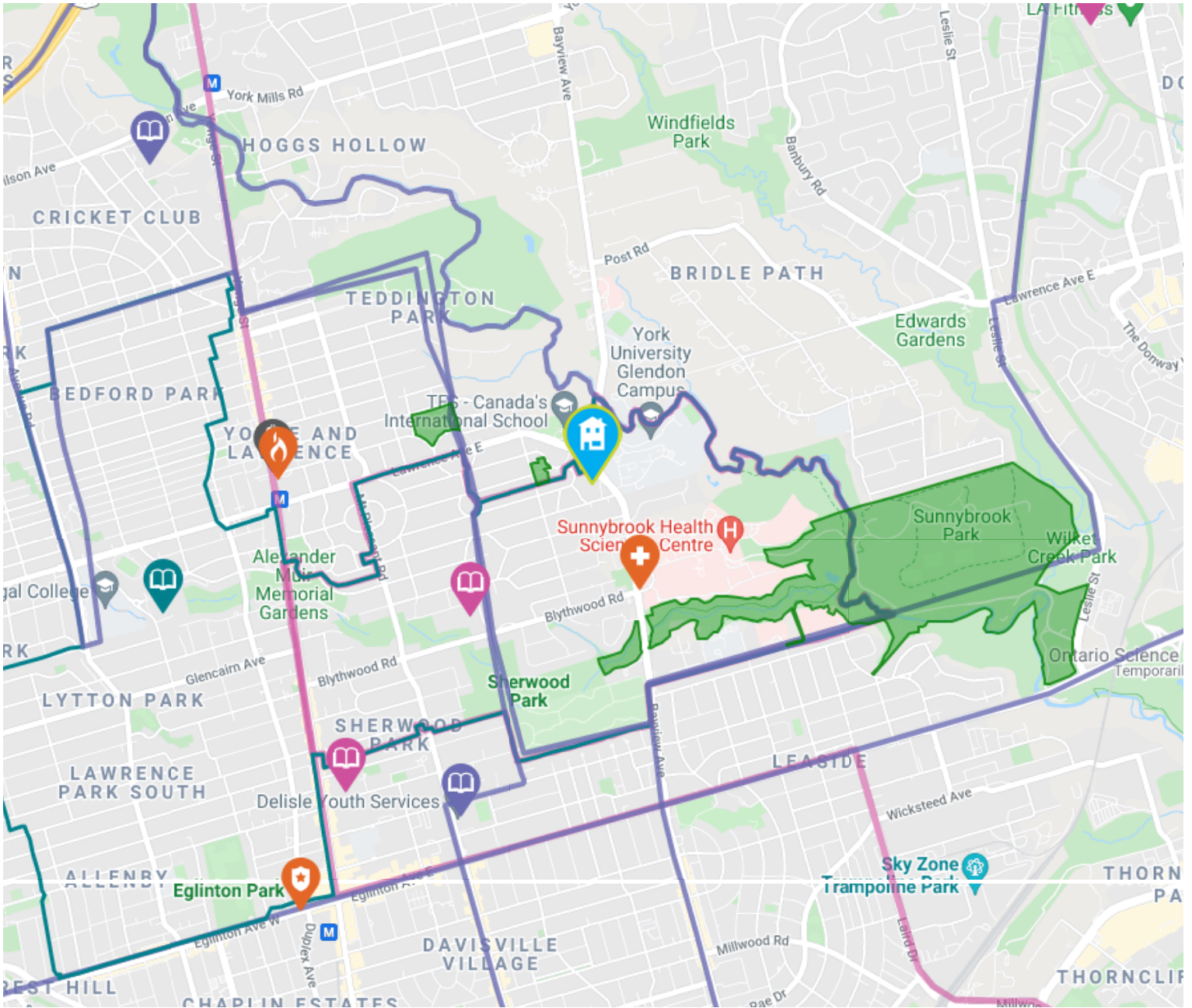
Grades 3 to 12
2365 Bayview Avenue











Children's Garden School

Grades PK to 3
670 Eglinton Avenue East

12 Pembury Ave.

The Bridle Path, Toronto



-  Elementary Schools
-  Middle Schools
-  High Schools
-  Transit
-  Safety
-  Elementary Attendance Zone
-  Middle Attendance Zone
-  High Attendance Zone
-  Parks
-  Convenience