

# 12 Humberside Ave.



3

Bedrooms



6

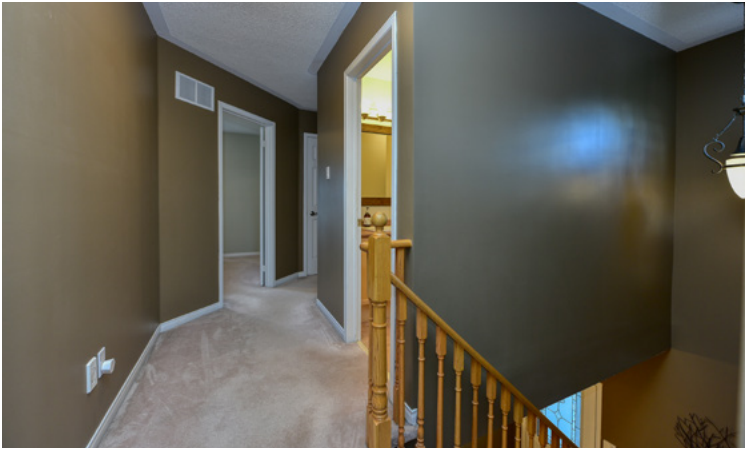
Parking



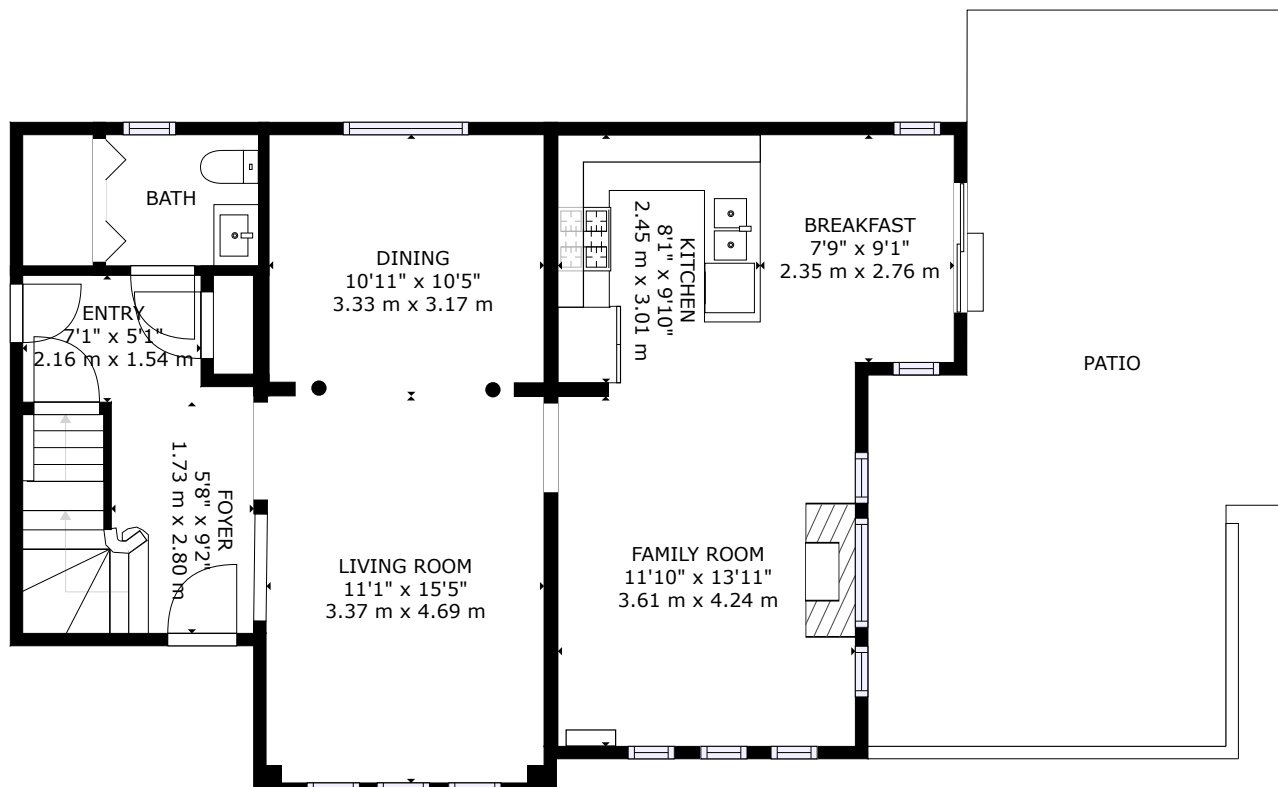
3+1

Bathrooms









## Main Floor (Floor 2)

### GROSS INTERNAL AREA

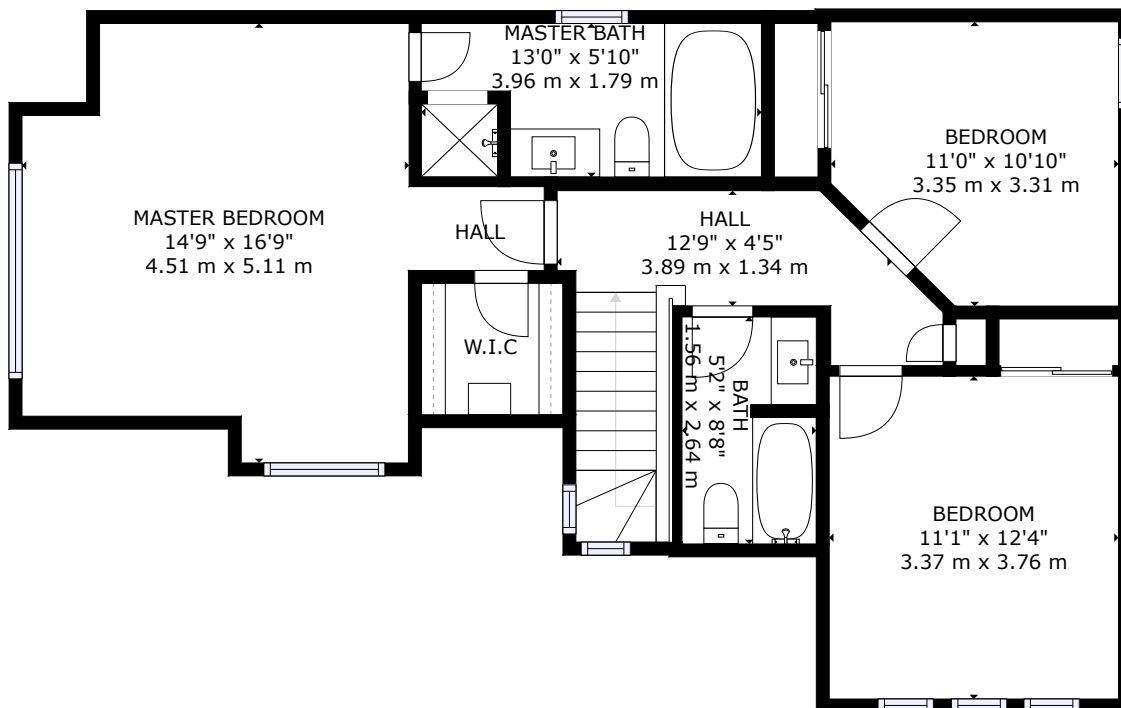
FLOOR 1: 665 sq ft, 62 m<sup>2</sup>, FLOOR 2: 814 sq ft, 76 m<sup>2</sup>

FLOOR 3: 794 sq ft, 74 m<sup>2</sup>, EXCLUDED AREAS:

PATIO: 402 sq ft, 37 m<sup>2</sup>

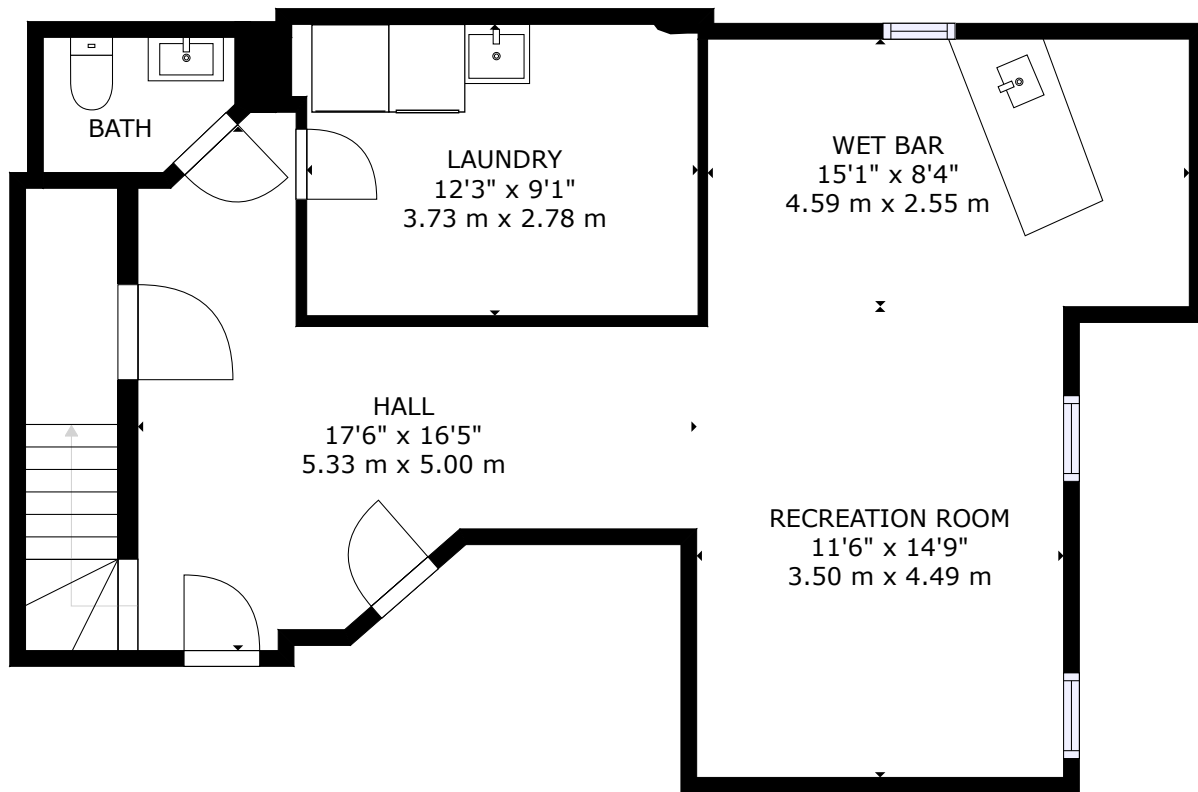
TOTAL: 2274 sq ft, 211 m<sup>2</sup>

SIZES AND DIMENSIONS ARE APPROXIMATE, ACTUAL MAY VARY.



### Second Floor (Floor 3)

GROSS INTERNAL AREA  
 FLOOR 1: 665 sq ft, 62 m<sup>2</sup>, FLOOR 2: 814 sq ft, 76 m<sup>2</sup>  
 FLOOR 3: 794 sq ft, 74 m<sup>2</sup>, EXCLUDED AREAS:  
 PATIO: 402 sq ft, 37 m<sup>2</sup>  
 TOTAL: 2274 sq ft, 211 m<sup>2</sup>  
 SIZES AND DIMENSIONS ARE APPROXIMATE, ACTUAL MAY VARY.



### Basement (Floor 1)

GROSS INTERNAL AREA  
 FLOOR 1: 665 sq ft, 62 m<sup>2</sup>, FLOOR 2: 814 sq ft, 76 m<sup>2</sup>  
 FLOOR 3: 794 sq ft, 74 m<sup>2</sup>, EXCLUDED AREAS:  
 PATIO: 402 sq ft, 37 m<sup>2</sup>  
 TOTAL: 2274 sq ft, 211 m<sup>2</sup>  
 SIZES AND DIMENSIONS ARE APPROXIMATE, ACTUAL MAY VARY.

# 12 Humberside Ave, Brampton, ON L7A 1L4

## SCHOOLS

With excellent assigned and local public schools very close to this home, your kids will get a great education in the neighbourhood.



### Alloa PS

Designated Catchment School  
Grades PK to 8  
1248 Mayfield Rd

### É Élém Carrefour des Jeunes

Designated Catchment School  
Grades PK to 6  
375 Centre St N

### Beatty-Fleming Sr PS

Designated Catchment School  
Grades 6 to 8  
21 Campbell Dr

### Heart Lake SS

Designated Catchment School  
Grades 9 to 12  
296 Conestoga Dr

### Brampton Centennial SS

Designated Catchment School  
Grades 9 to 12  
251 McMurphy Ave S


### ÉS Jeunes sans frontières

Designated Catchment School  
Grades 7 to 12  
7585 Financial Dr

## PARKS & REC.

This home is located in park heaven, with 4 parks and 5 recreation facilities within a 20 minute walk from this address.



 **Cunnington Parkette**  
Humberside Ave & Bushberry Road

  
2 min



 **Chinguacousy Lions Club Water Tower Park**  
Mayfield Rd

  
8 min



 **Snelgrove Community Centre**  
11692 Hurontario St

  
9 min



### FACILITIES WITHIN A 20 MINUTE WALK

3 Playgrounds      1 Community Hall  
1 Auditorium

## TRANSIT

Public transit is at this home's doorstep for easy travel around the city. The nearest street transit stop is only a 5 minute walk away and the nearest rail transit stop is a 88 minute walk away.



### Nearest Rail Transit Stop

Mount Pleasant GO



### Nearest Street Level Transit Stop

Hurontario St. @ Mayfield Rd.



5 min

## SAFETY

With safety facilities in the area, help is always close by. Facilities near this home include a fire station, a police station, and a hospital within 7.41km.

 **William Osler Health System - Brampton Civic Hospital**  
2100 Bovaird Dr E



### Fire Station

2 Snelcrest Dr.



### Police Station

1050 Sandalwood Pkwy. W.

## CONVENIENCE

This home is located near everyday amenities to make your daily errands easier.



### Coffee



### Gym



### Grocery



### Gas Station



# 12 Humberside Ave, Brampton, ON L7A 1L4

## PUBLIC SCHOOLS

Your neighbourhood is part of a community of Public Schools offering Elementary, Middle, and High School programming.

### Alloa PS

Designated Catchment School  
Grades PK to 8  
1248 Mayfield Rd

### Beatty-Fleming Sr PS

Designated Catchment School  
Grades 6 to 8  
21 Campbell Dr

### Brampton Centennial SS

Designated Catchment School  
Grades 9 to 12  
251 McMurphy Ave S

### É Élém Carrefour des Jeunes

Designated Catchment School  
Grades PK to 6  
375 Centre St N

### Heart Lake SS

Designated Catchment School  
Grades 9 to 12  
296 Conestoga Dr

## ALTERNATIVE & SPECIAL SCHOOLS

Nearby alternative and special education schools include:

### Green Apple Alternative School

Grades 9 to 12  
5 Brisdale Dr

### Judith Nyman SS

Grades 9 to 12  
1305 Williams Pkwy



## CATHOLIC SCHOOLS

Your neighbourhood is part of a community of Catholic Schools offering Elementary, Middle, and High School programming.

### St Rita Catholic ES

Grades PK to 8 (Assigned)  
30 Summer Valley Dr

### ÉÉC Saint-Jean-Bosco (Caledon)

Grades PK to 6 (Assigned)  
55

### St Edmund Campion SS

Grades 9 to 12 (Assigned)  
275 Brisdale Dr

### ÉSC Sainte-Famille

Grades 7 to 12 (Assigned)  
1780 Meadowvale Blvd

## PRIVATE SCHOOLS

The private schools nearest to you are:



### Home Sweet Home Montessori Academy

Grades PK to 6  
2939 Old School Rd

### Crawford Adventist Academy

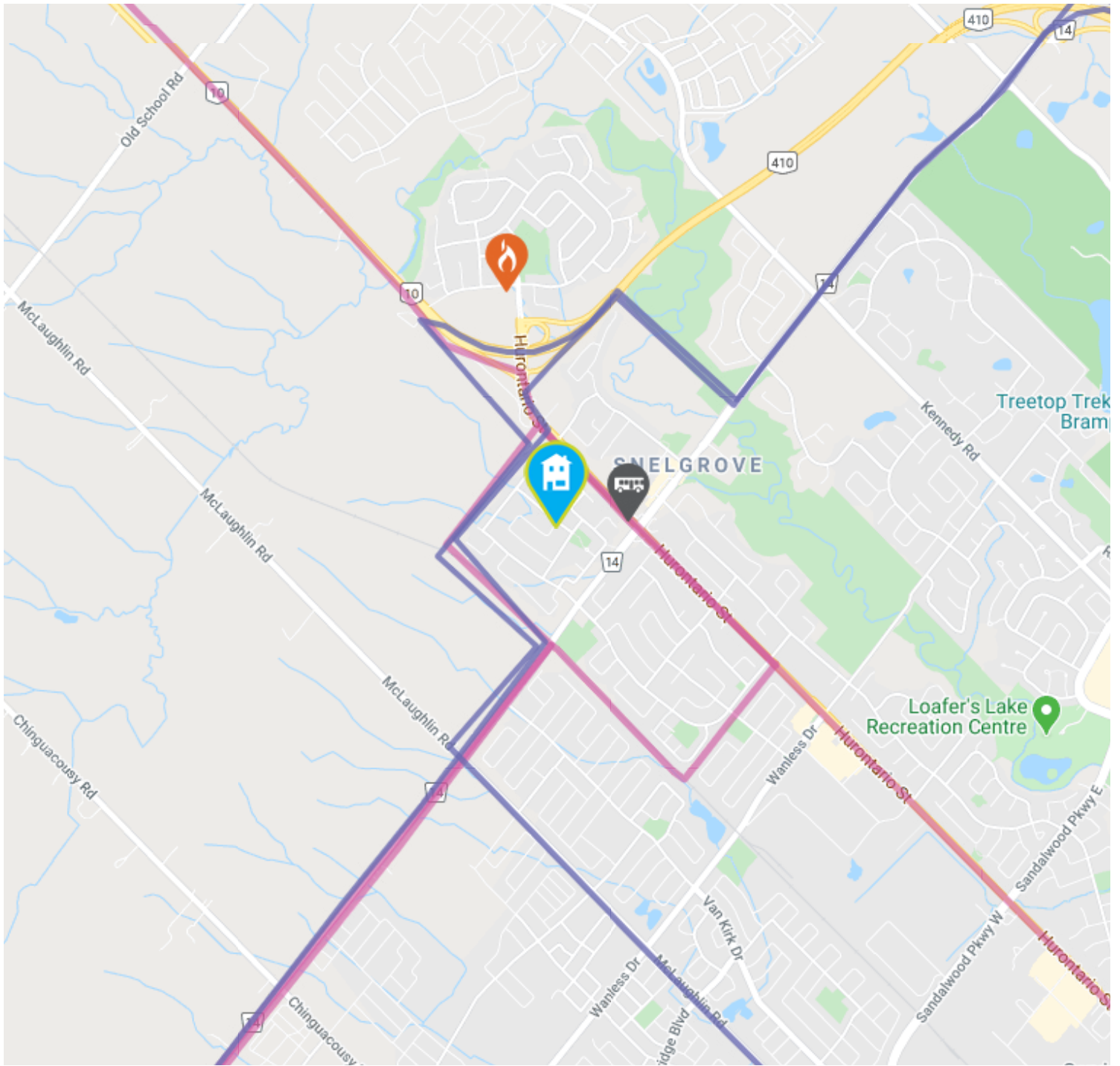
Grades PK to 8  
2626 Mayfield Rd











### Brampton Christian School

Grades PK to 12  
12480 Hutchinson Farm Ln

### Guru Tegh Bahadur International School

Grades PK to 12  
180 Sandalwood Pkwy E



- |  |  |  |  |   |
|--|--|--|--|---|
|  Elementary Schools         |  Middle Schools         |  High Schools         |  Transit |  Safety      |
|  Elementary Attendance Zone |  Middle Attendance Zone |  High Attendance Zone |  Parks   |  Convenience |

This information may contain errors and omissions. You are not permitted to rely on the contents of this information and must take steps to independently verify its contents with the appropriate authorities (school boards, governments etc.). As a recipient of this information, you agree not to hold us, our licensors or the owners of the information liable for any damages, howsoever caused.