



10829 McVean Dr.

Brampton




4+1
Bedrooms


4
Parking
Spaces


3+1
Bathrooms







Nick Singh

Sales Representative

(647) 989-9041

Kulpreet Bhambra

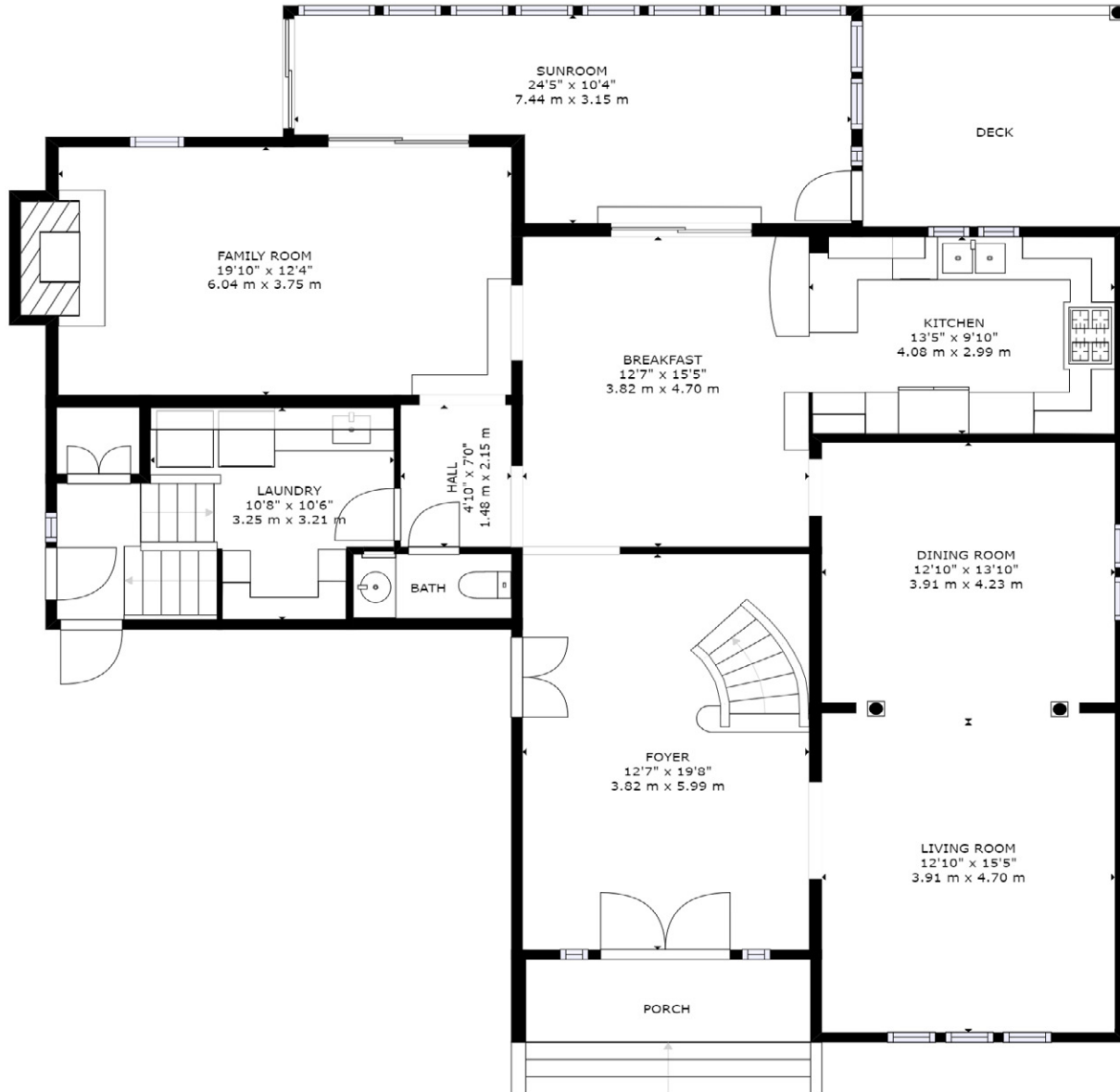
Sales Representative

(647) 470-4109



Kulpreet Bhambra
Sales Representative
647-989-9041

Nick Singh
Sales Representative
(647) 470-4109

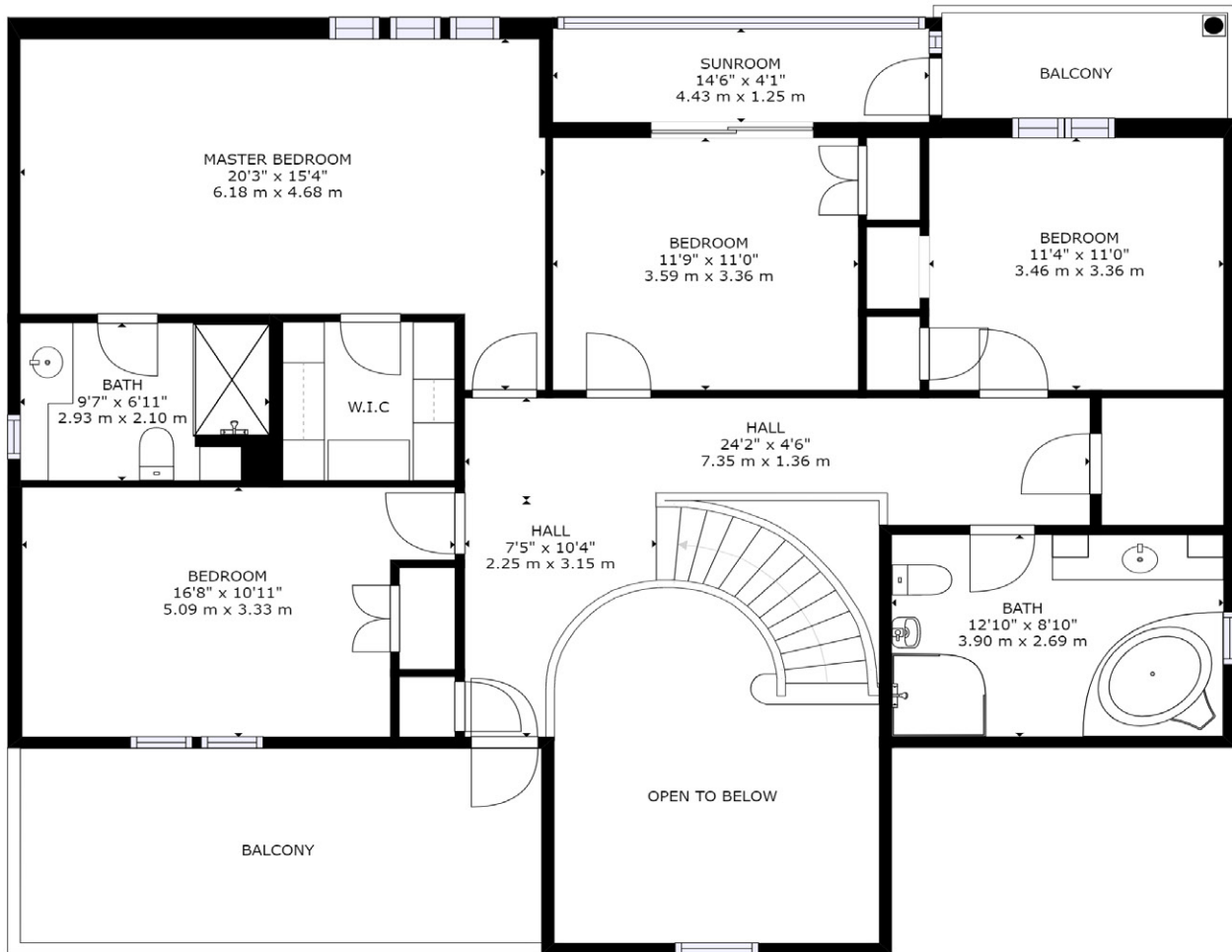


Floor 2
Main Floor

SIZES AND DIMENSIONS ARE APPROXIMATE, ACTUAL MAY VARY.

Kulpreet Bhambra
Sales Representative
647-989-9041

Nick Singh
Sales Representative
(647) 470-4109

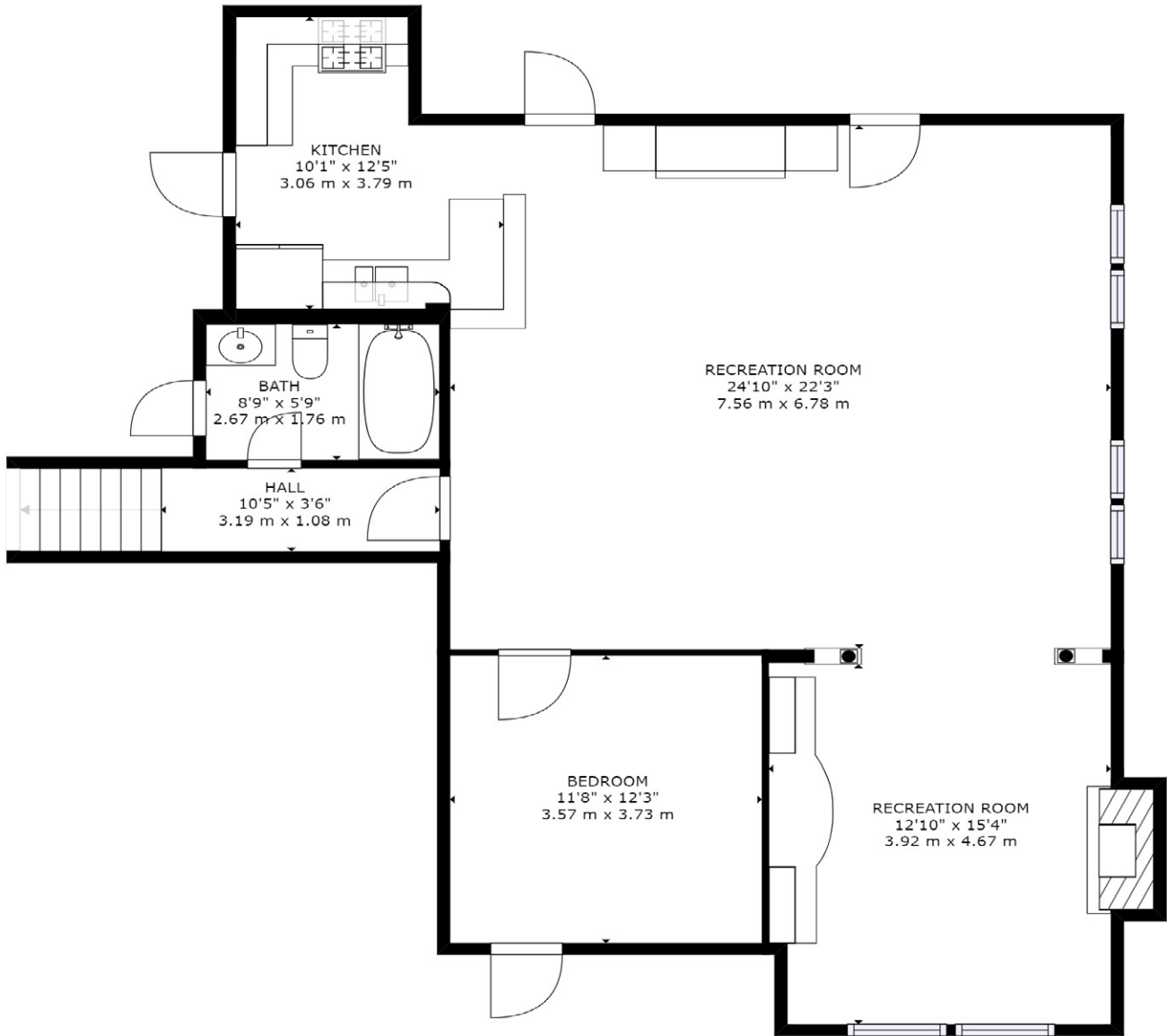


Floor 3
Second Floor

SIZES AND DIMENSIONS ARE APPROXIMATE, ACTUAL MAY VARY.

Kulpreet Bhambra
Sales Representative
647-989-9041

Nick Singh
Sales Representative
(647) 470-4109



Floor 1
Basement

SIZES AND DIMENSIONS ARE APPROXIMATE, ACTUAL MAY VARY.

Kulpreet Bhambra
Sales Representative
647-989-9041

Nick Singh
Sales Representative
(647) 470-4109



10829 McVean Dr, Brampton, ON L6P 0K2

SCHOOLS

With excellent assigned and local public schools near this home, your kids will get a great education in the neighbourhood.



Treeline PS

Designated Catchment School
Grades PK to 8
145 Treeline Blvd

Humberview SS

Designated Catchment School
Grades 9 to 12
135 Kingsview Dr

ÉS Jeunes sans frontières

Designated Catchment School
Grades 7 to 12
7585 Financial Dr

PARKS & REC.

This home is located in park heaven, with 4 parks and 4 recreation facilities within a 20 minute walk from this address.



Martyniuk Park

Michelangelo Blvd



9 min

Gladstone-Shaw Park

Rosegarden Dr



16 min

Cassin Park

Grafton Cres



15 min

FACILITIES WITHIN A 20 MINUTE WALK

2 Playgrounds
1 Trail

1 Sports Field

TRANSIT

Public transit is at this home's doorstep for easy travel around the city. The nearest street transit stop is only a 9 minute walk away.

Nearest Street Level Transit Stop

Gordon Randle Dr n/of Countryside Dr

9 min

SAFETY

With safety facilities in the area, help is always close by. Facilities near this home include a fire station, a hospital, and a police station within 8.84km.

William Osler Health System - Brampton Civic Hospital

2100 Bovaird Dr E

Fire Station

10775 The Gore Road

Police Station

10 Peel Centre Dr.

CONVENIENCE

This home is located near everyday amenities to make your daily errands easier.

Coffee

Gym

Grocery

Gas Station

Kulpreet Bhambra
Sales Representative
647-989-9041

Nick Singh
Sales Representative
(647) 470-4109



10829 McVean Dr, Brampton, ON L6P 0K2

PUBLIC SCHOOLS

Your neighbourhood is part of a community of Public Schools offering Elementary, Middle, and High School programming.

Treeline PS

Designated Catchment School
Grades PK to 8
145 Treeline Blvd

Humberview SS

Designated Catchment School
Grades 9 to 12
135 Kingsview Dr

ÉS Jeunes sans frontières

Designated Catchment School
Grades 7 to 12
7585 Financial Dr

ALTERNATIVE & SPECIAL SCHOOLS

Nearby alternative and special education schools include:

Judith Nyman SS

Grades 9 to 12
1305 Williams Pkwy



CATHOLIC SCHOOLS

Your neighbourhood is part of a community of Catholic Schools offering Elementary, Middle, and High School programming.

St Patrick School

Grades PK to 8 (Assigned)
11948 The Gore Rd

ÉÉC Saint-Jean-Bosco (Caledon)

Grades PK to 6 (Assigned)
55

Cardinal Ambrozic Catholic HS

Grades 9 to 12 (Assigned)
10 Castle Oaks Crossing

ÉSC Sainte-Famille

Grades 7 to 12 (Assigned)
1780 Meadowvale Blvd

PRIVATE SCHOOLS

The private schools nearest to you are:

Hope Academy

Grades PK to 6
4316 Ebenezer Rd

Innocent Hearts High School

Grades 9 to 12
60 Cottrelle Blvd

Wali ul Asr School

84 Simpson Rd

Shiloh Christian Institute

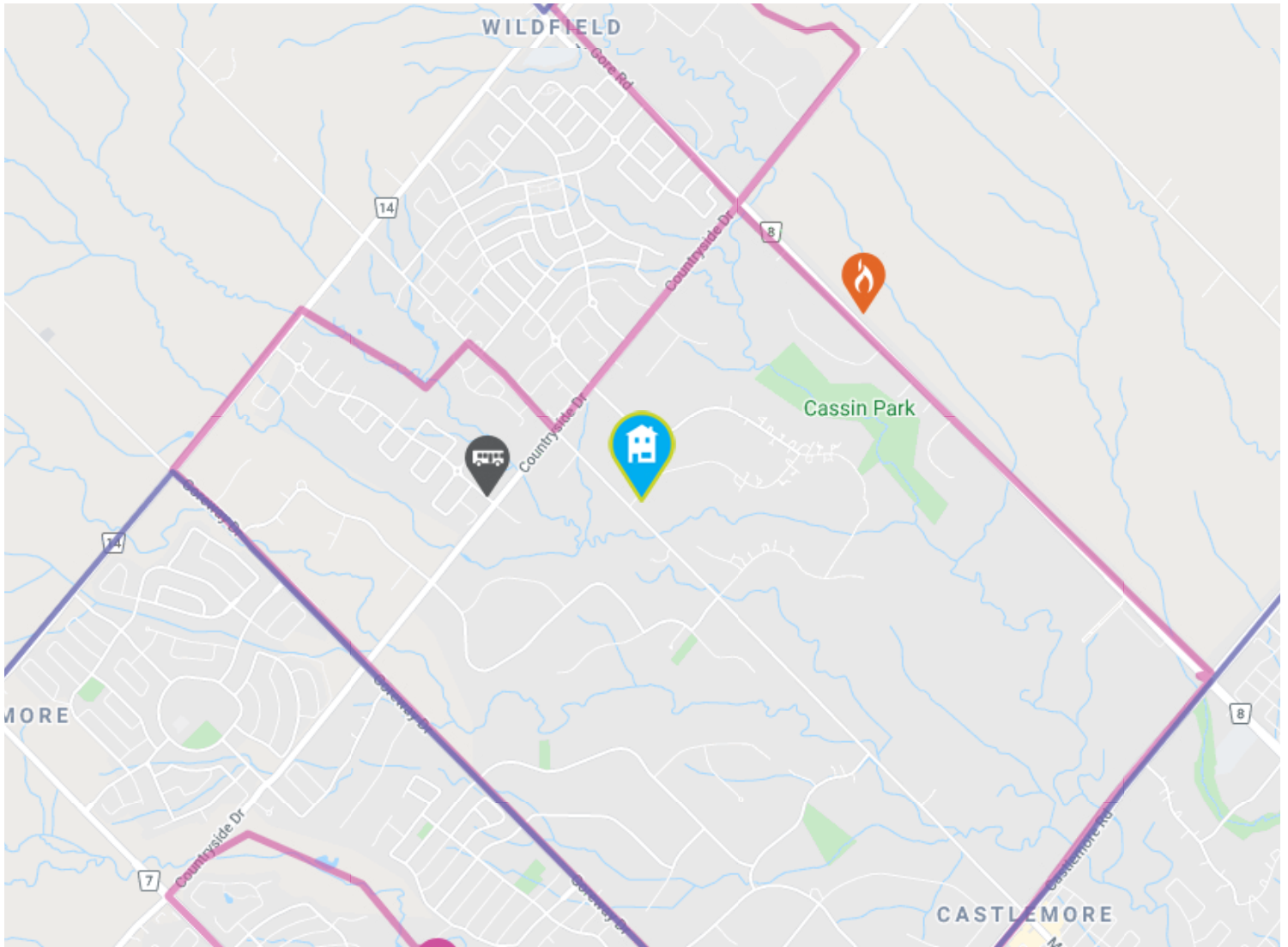
Grades PK to 12
4316 Ebenezer Rd

Kulpreet Bhambra
Sales Representative
647-989-9041

Nick Singh
Sales Representative
(647) 470-4109



10829 McVean Dr, Brampton, ON L6P 0K2



- | | | | | |
|----------------------------|------------------------|----------------------|---------|-------------|
| Elementary Schools | Middle Schools | High Schools | Transit | Safety |
| Elementary Attendance Zone | Middle Attendance Zone | High Attendance Zone | Parks | Convenience |